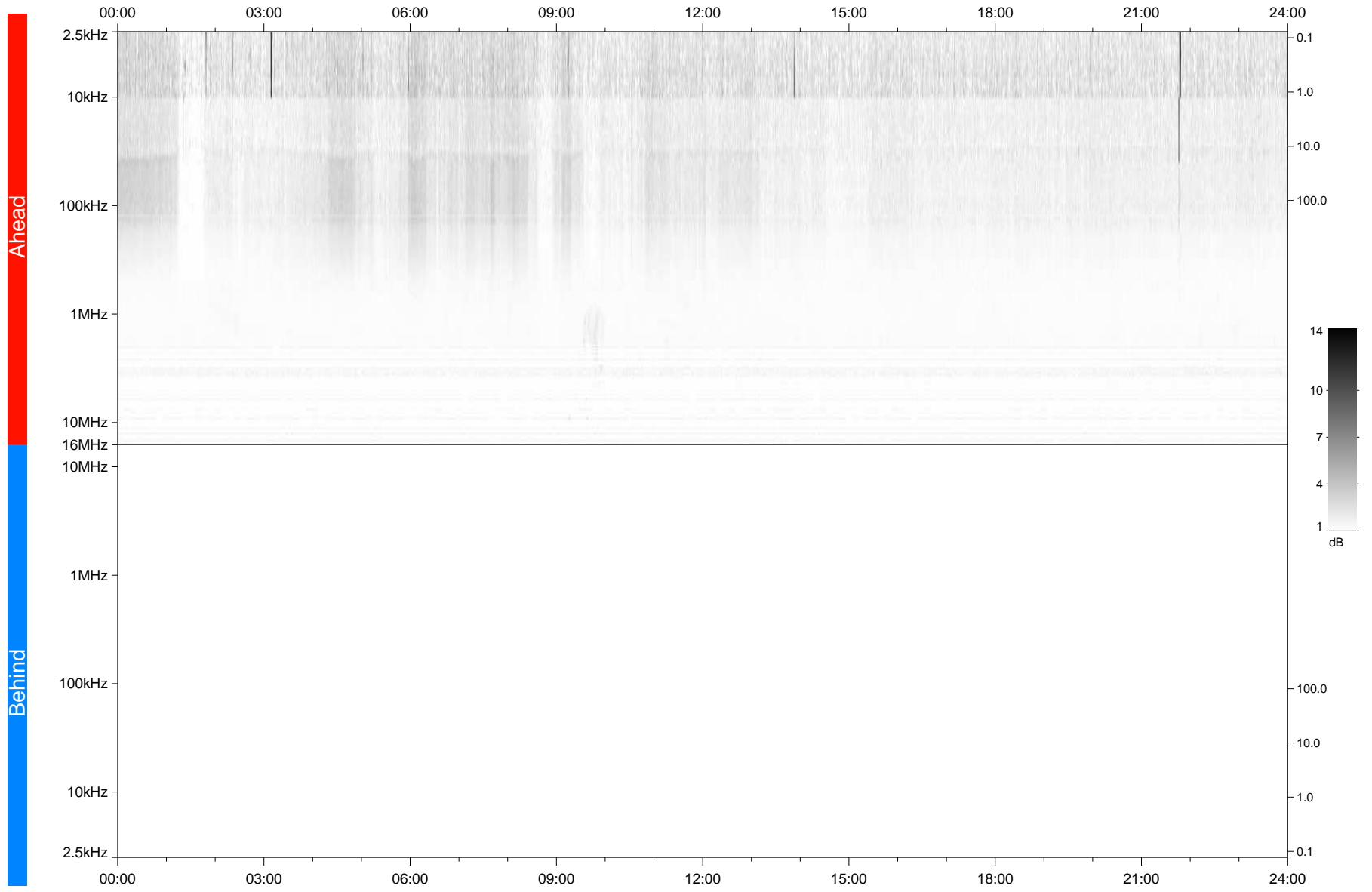


STEREO/WAVES Daily Summary - 17-Sep-2020 (DOY 261)

Ahead source file: swaves_ahead_2020_261_1_05.fin
Ahead PSE Angle: -62.4°



Behind PSE Angle: 58.2°
Behind source file: No STEREO-B data

Time (UTC)

file: stereo_swaves_daily-summary_gray_20200917_v03
made by: space.umn.edu on macOS with TDL 8.8.2 on 2022-09-15 16:50:37, with TLib V945 / dynspec V311