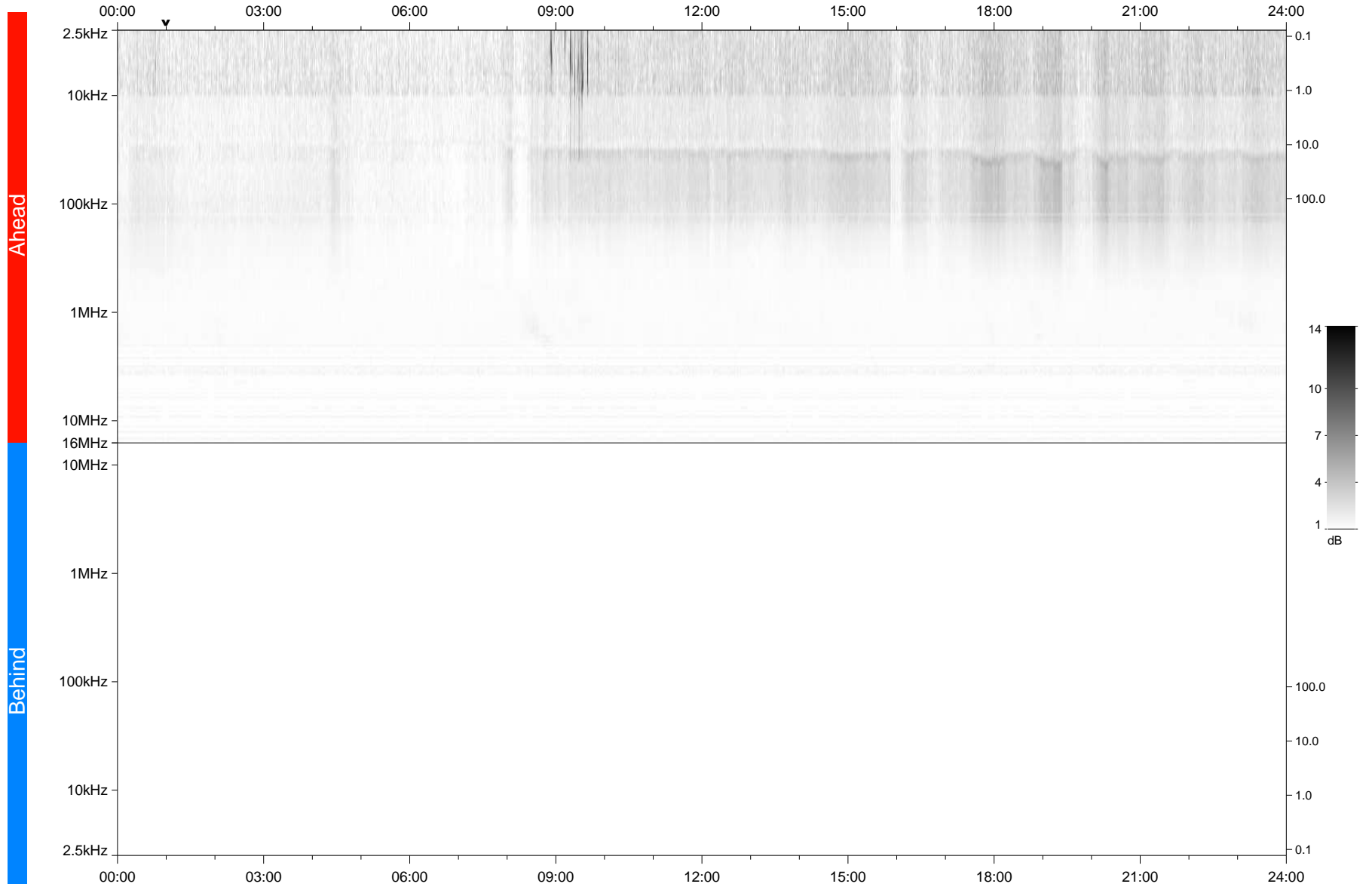


STEREO/WAVES Daily Summary - 12-Sep-2020 (DOY 256)

Ahead source file: swaves_ahead_2020_256_1_05.fin
Ahead PSE Angle: -62.8°



Behind PSE Angle: 58.3°
Behind source file: No STEREO-B data

Time (UTC)

file: stereo_swaves_daily-summary_gray_20200912_v04
made by: space.umn.edu on macOS with TDL 8.8.2 on 2022-10-03 17:40:42, with TLib V945 / dynspec V311