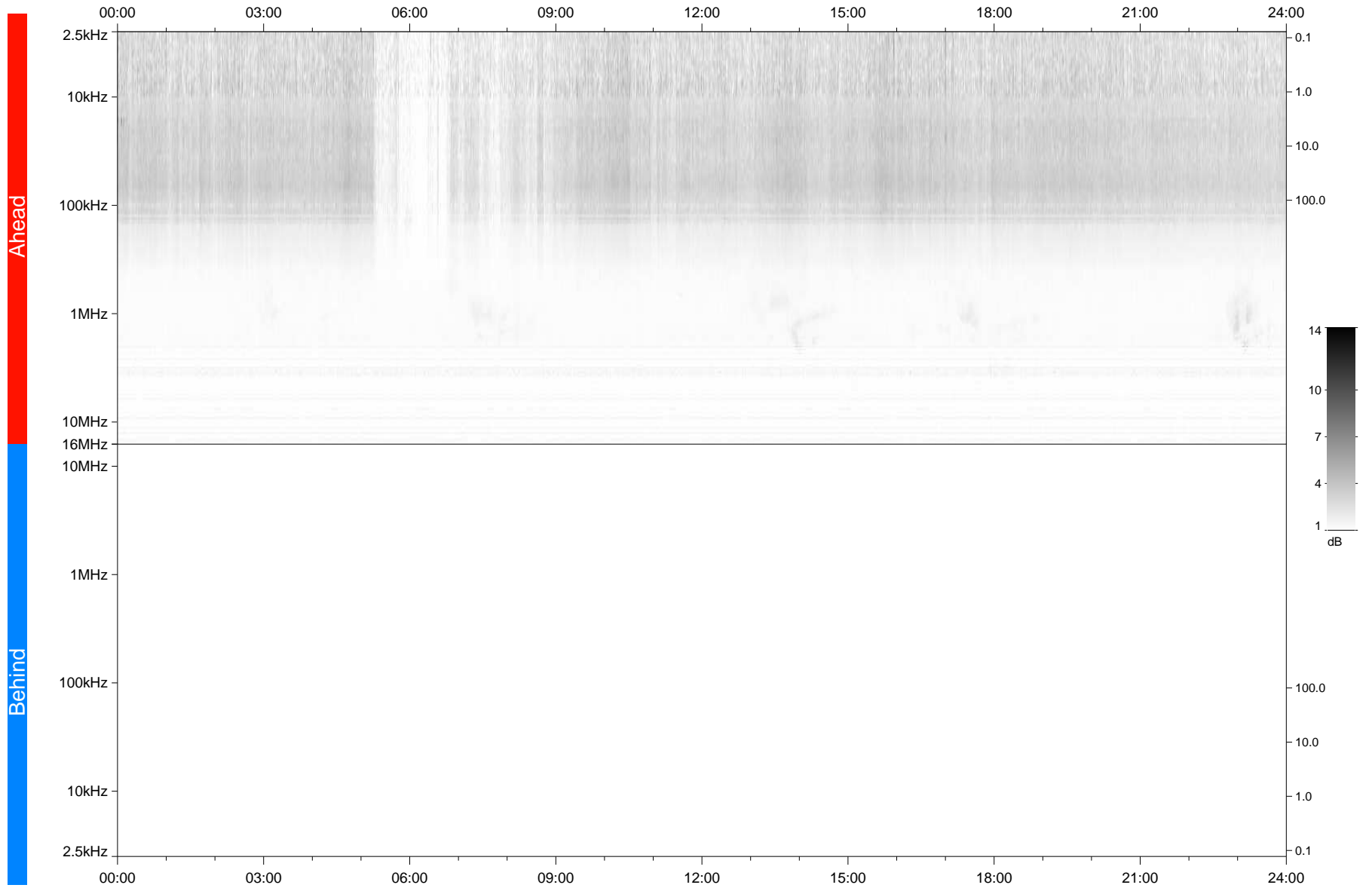


STEREO/WAVES Daily Summary - 30-Aug-2020 (DOY 243)

Ahead source file: swaves_ahead_2020_243_1_06.fin
Ahead PSE Angle: -63.9°



Behind PSE Angle: 58.7°
Behind source file: No STEREO-B data

Time (UTC)

file: stereo_swaves_daily-summary_gray_20200830_v03
made by: space.umn.edu on macOS with TDL 8.8.2 on 2022-09-15 16:25:59, with TLib V945 / dynspec V311