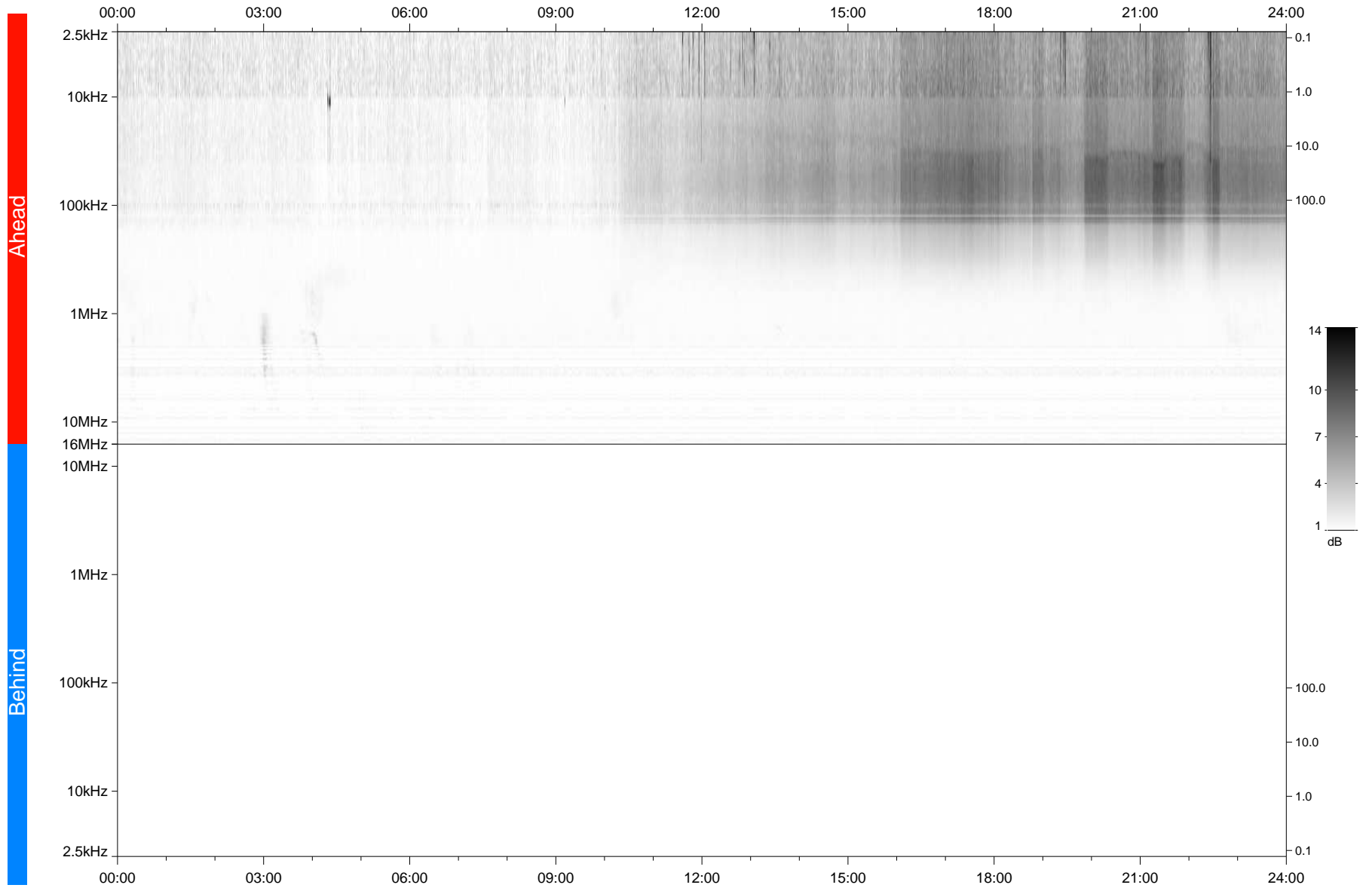


STEREO/WAVES Daily Summary - 26-Aug-2020 (DOY 239)

Ahead source file: swaves_ahead_2020_239_1_05.fin
Ahead PSE Angle: -64.2°



Behind PSE Angle: 58.9°
Behind source file: No STEREO-B data

Time (UTC)

file: stereo_swaves_daily-summary_gray_20200826_v03
made by: space.umn.edu on macOS with TDL 8.8.2 on 2022-09-15 16:20:31, with Tlib V945 / dynspec V311