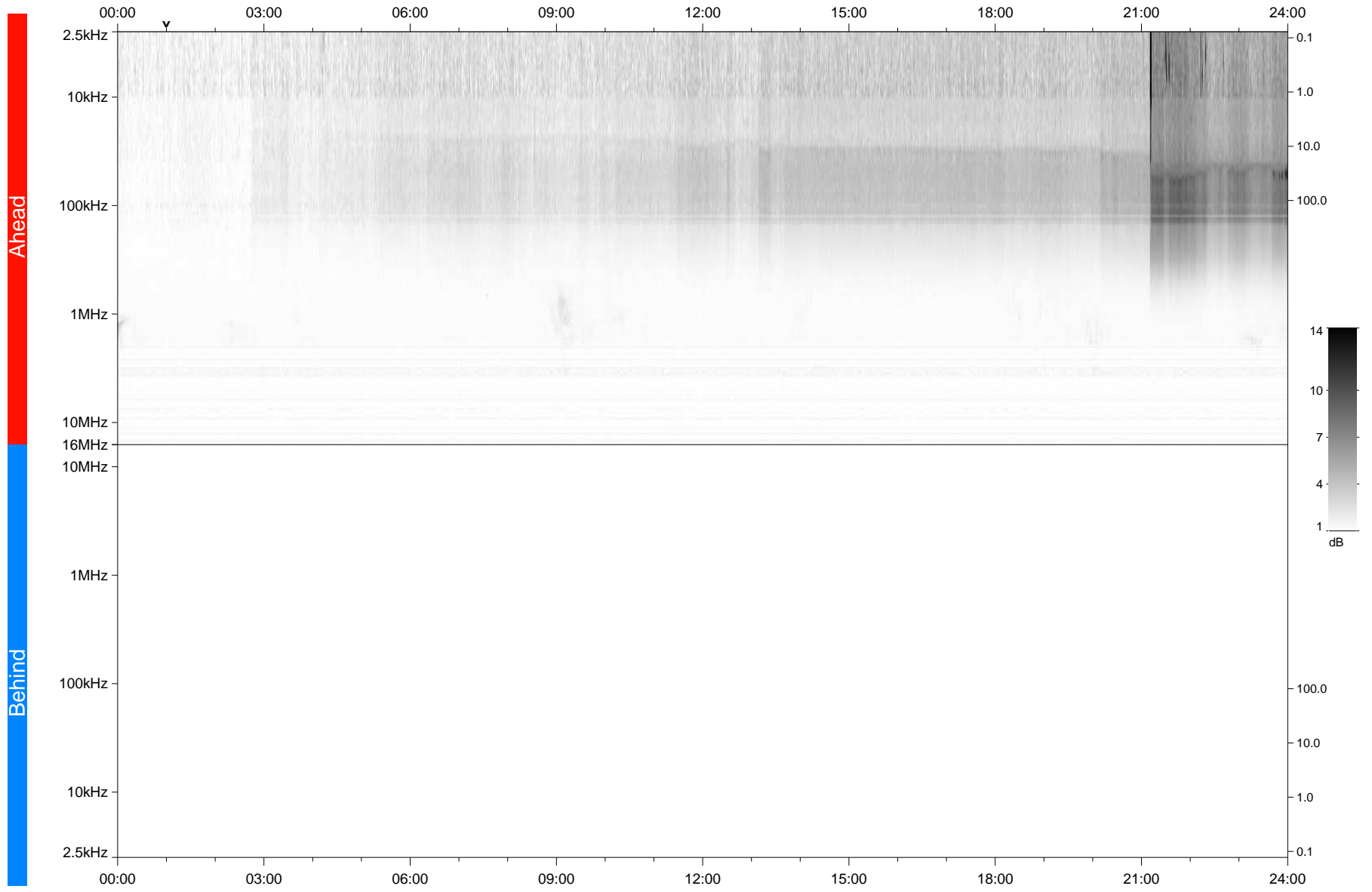


STEREO/WAVES Daily Summary - 19-Aug-2020 (DOY 232)

Ahead source file: swaves_ahead_2020_232_1_05.fin
Ahead PSE Angle: -64.9°



Behind PSE Angle: 59.2°
Behind source file: No STEREO-B data

Time (UTC)

file: stereo_swaves_daily-summary_gray_20200819_v04
made by: space.umn.edu on macOS with TDL 8.8.2 on 2022-10-03 17:04:45, with Tlib V945 / dynspec V311