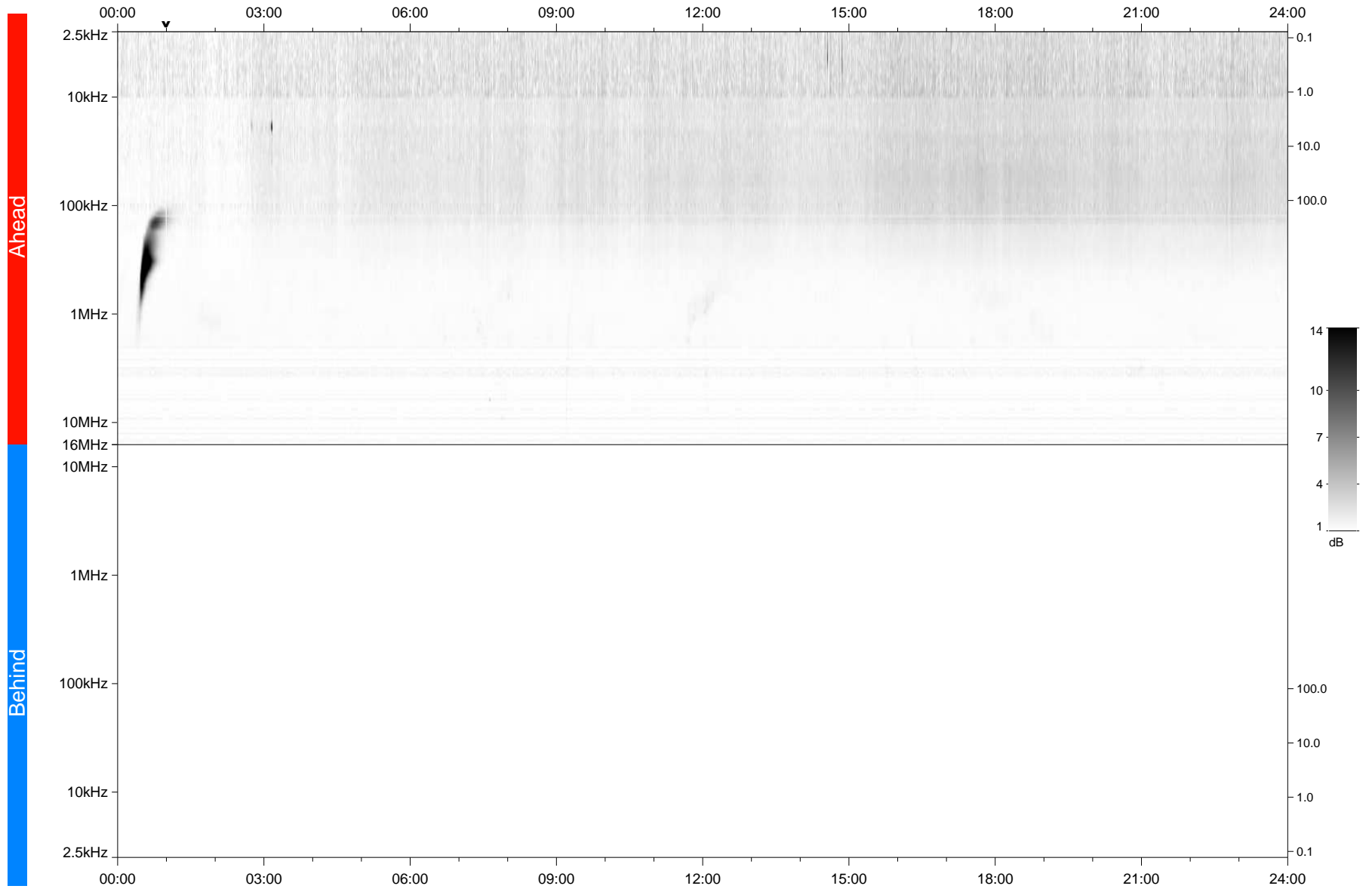


STEREO/WAVES Daily Summary - 17-Aug-2020 (DOY 230)

Ahead source file: swaves_ahead_2020_230_1_05.fin
Ahead PSE Angle: -65.1°



Behind PSE Angle: 59.2°
Behind source file: No STEREO-B data

Time (UTC)

file: stereo_swaves_daily-summary_gray_20200817_v03
made by: space.umn.edu on macOS with TDL 8.8.2 on 2022-09-15 16:08:14, with TLib V945 / dynspec V311