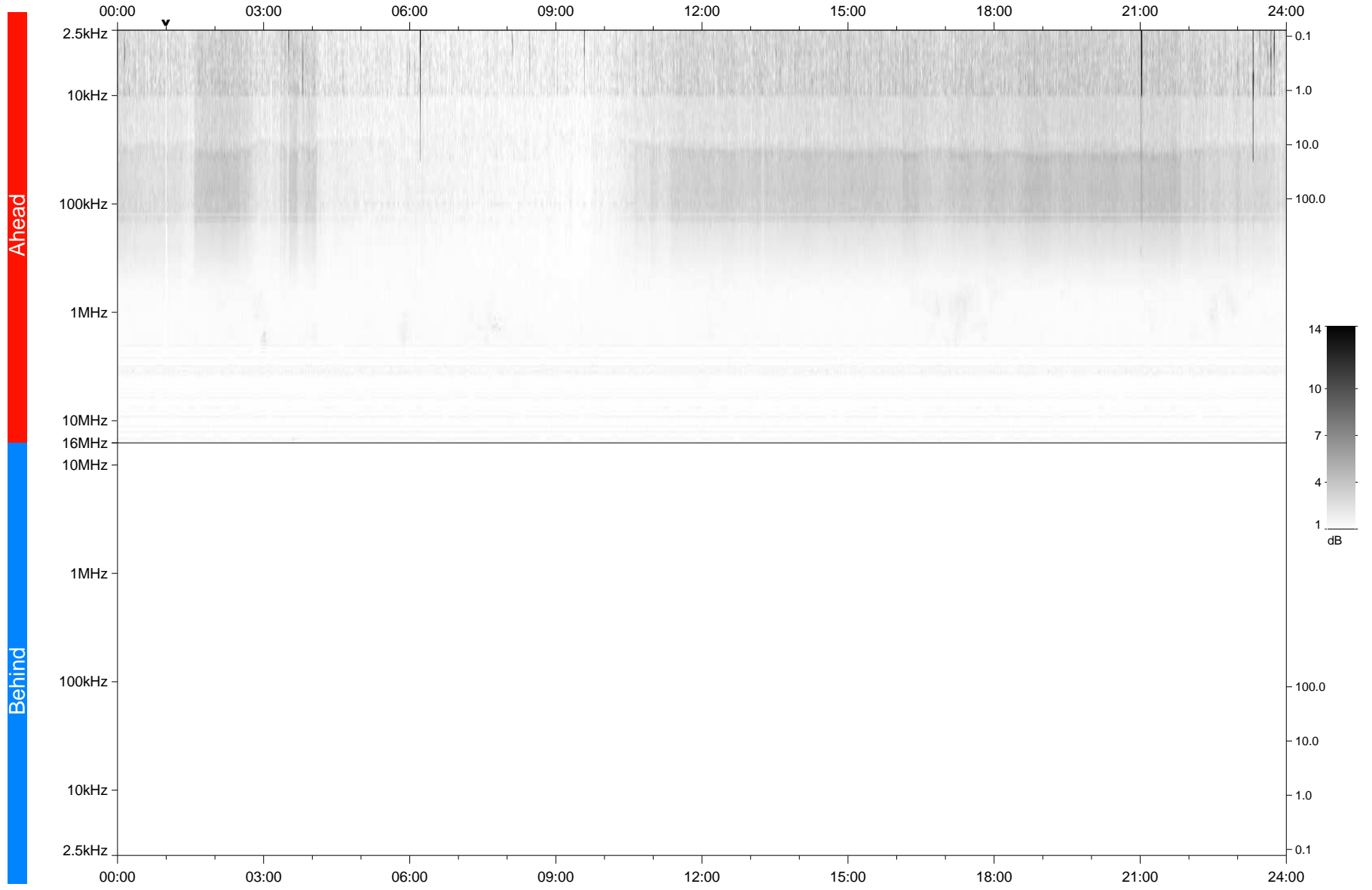


STEREO/WAVES Daily Summary - 11-Aug-2020 (DOY 224)

Ahead source file: swaves_ahead_2020_224_1_05.fin
Ahead PSE Angle: -65.6°



Behind PSE Angle: 59.6°
Behind source file: No STEREO-B data

Time (UTC)

file: stereo_swaves_daily-summary_gray_20200811_v04
made by: space.umn.edu on macOS with IDL 8.8.2 on 2022-10-03 16:52:45, with TLib V945 / dynspec V311