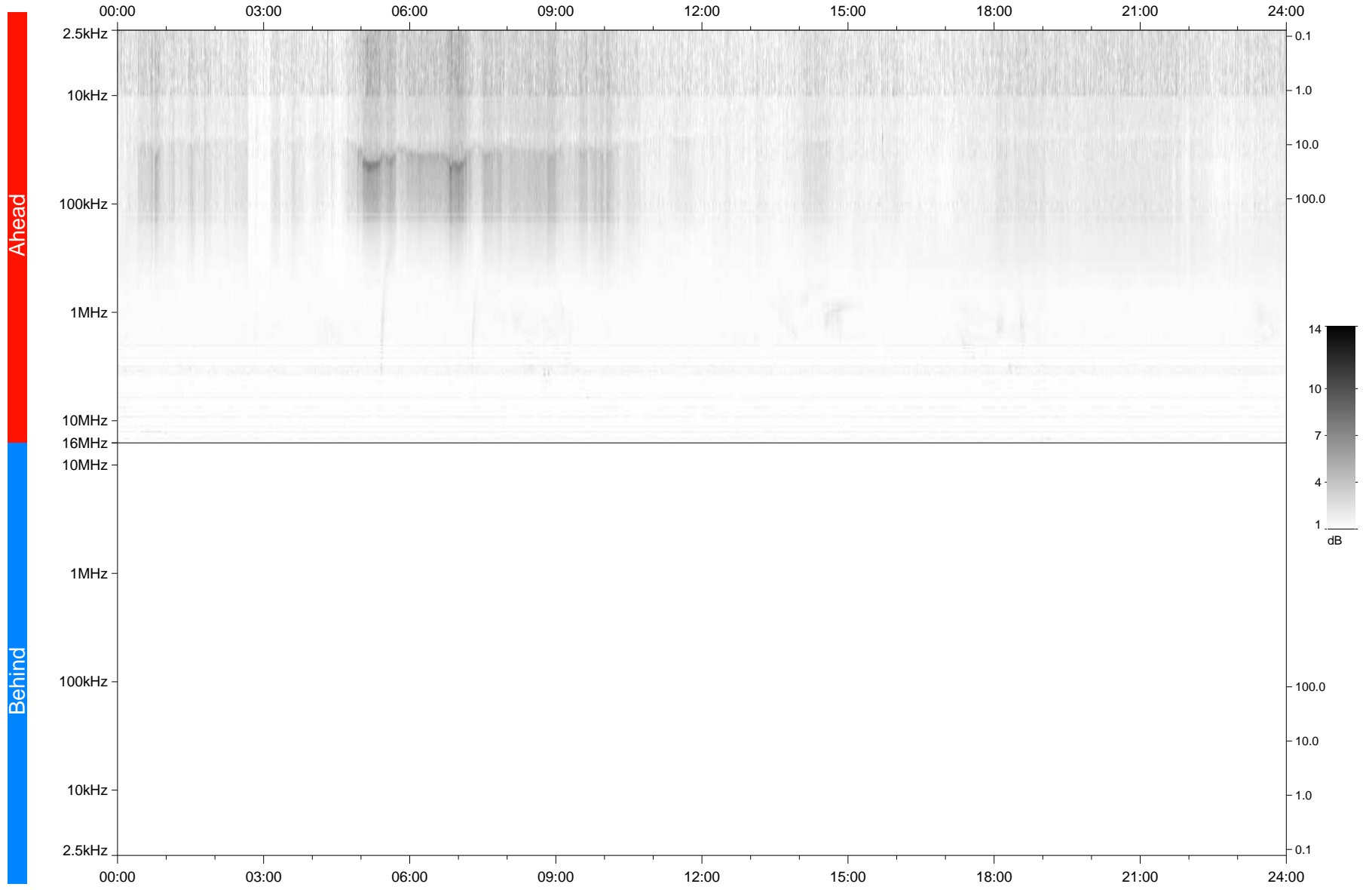


STEREO/WAVES Daily Summary - 06-Aug-2020 (DOY 219)

Ahead source file: swaves_ahead_2020_219_1_05.fin
Ahead PSE Angle: -66.1°



Behind PSE Angle: 59.8°
Behind source file: No STEREO-B data

Time (UTC)

file: stereo_swaves_daily-summary_gray_20200806_v04
made by: space.umn.edu on macOS with TDL 8.8.2 on 2022-10-03 16:45:16, with TLib V945 / dynspec V311