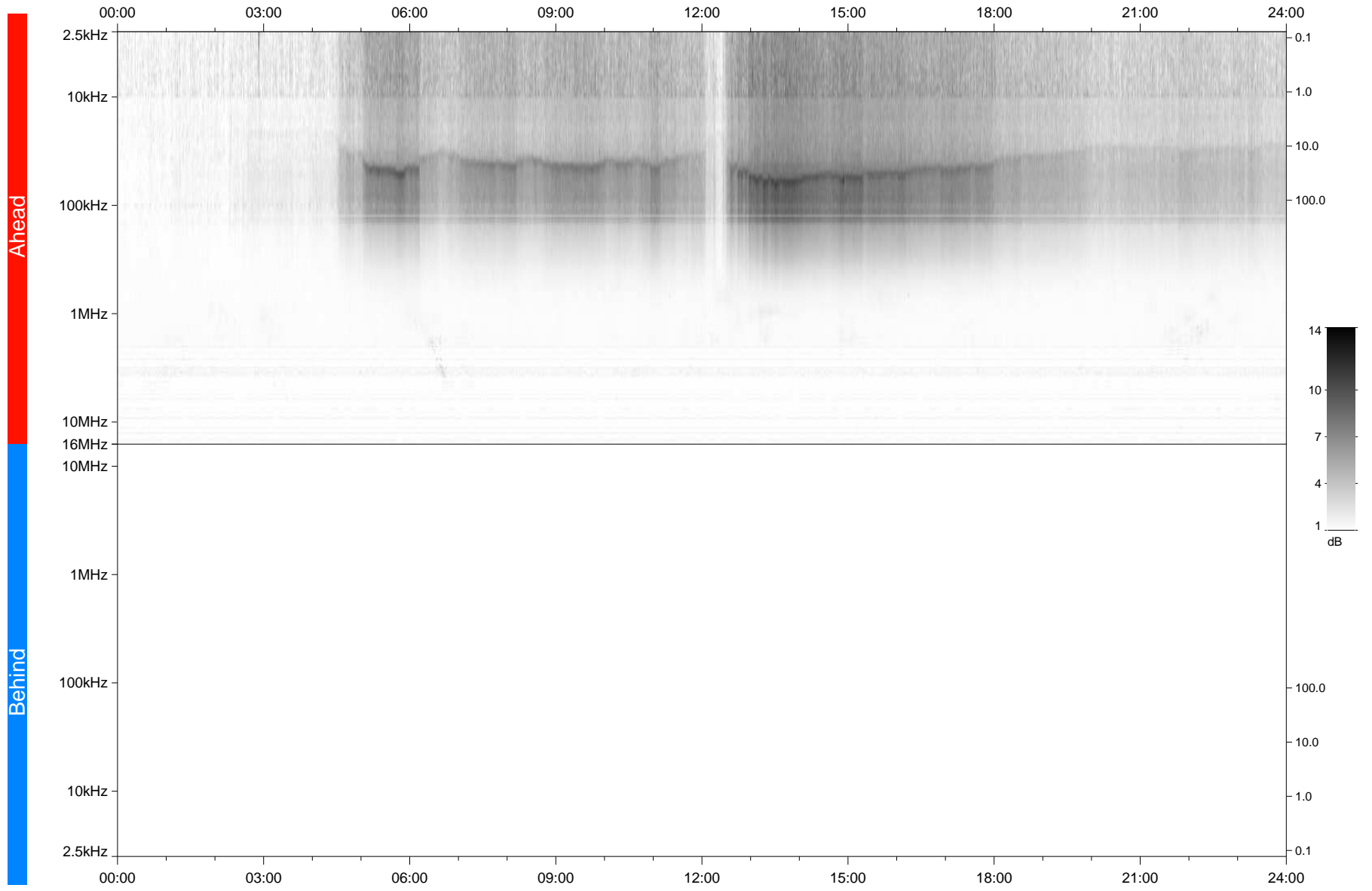


STEREO/WAVES Daily Summary - 04-Aug-2020 (DOY 217)

Ahead source file: swaves_ahead_2020_217_1_05.fin
Ahead PSE Angle: -66.3°



Behind PSE Angle: 59.9°
Behind source file: No STEREO-B data

Time (UTC)

file: stereo_swaves_daily-summary_gray_20200804_v03
made by: space.umn.edu on macOS with IDL 8.8.2 on 2022-09-15 15:50:27, with TMLib V945 / dynspec V311