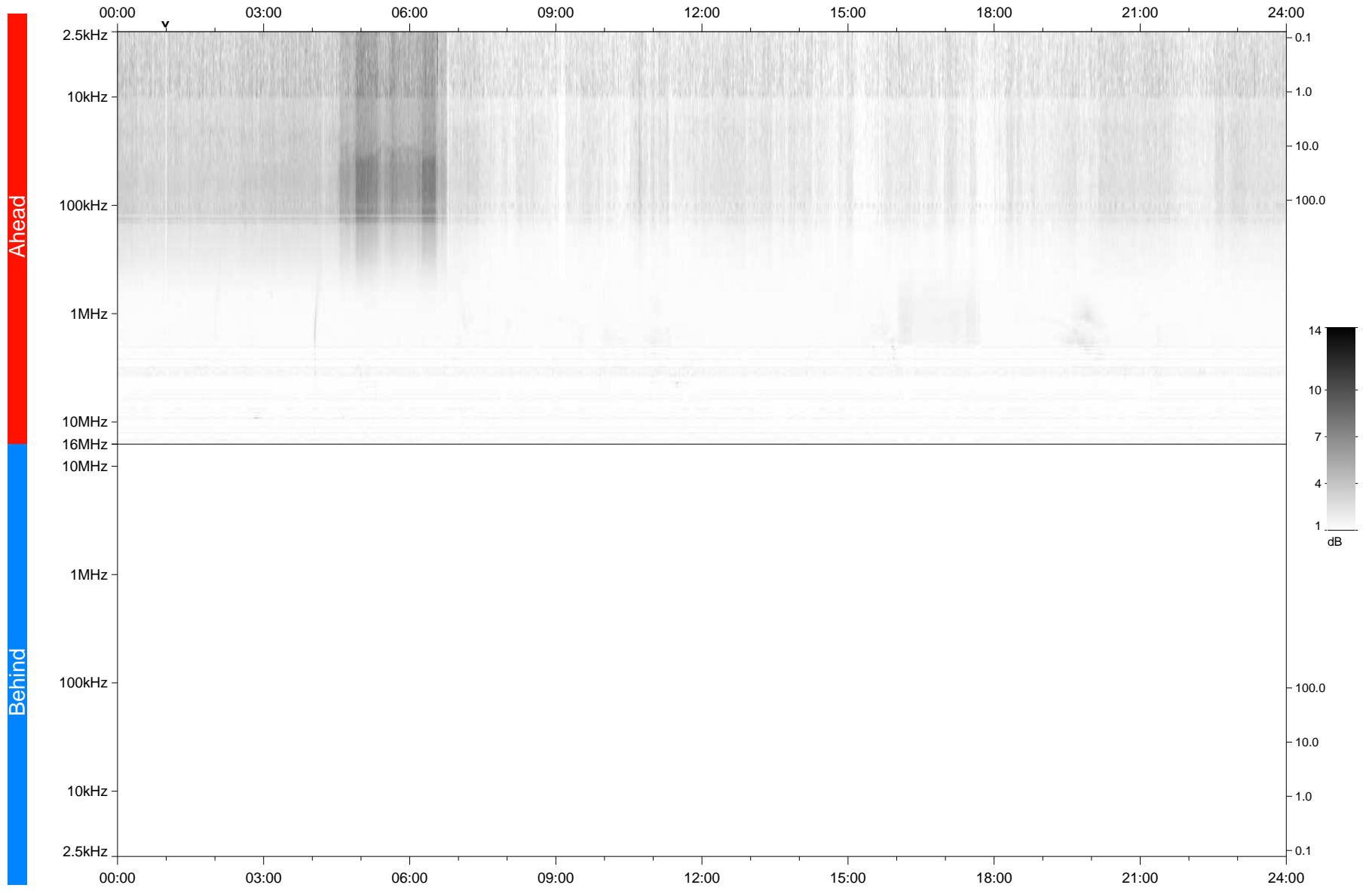


STEREO/WAVES Daily Summary - 03-Aug-2020 (DOY 216)

Ahead source file: swaves_ahead_2020_216_1_05.fin
Ahead PSE Angle: -66.3°



Behind PSE Angle: 60.0°
Behind source file: No STEREO-B data

Time (UTC)

file: stereo_swaves_daily-summary_gray_20200803_v03
made by: space.umn.edu on macOS with TDL 8.8.2 on 2022-09-15 15:49:05, with TLib V945 / dynspec V311