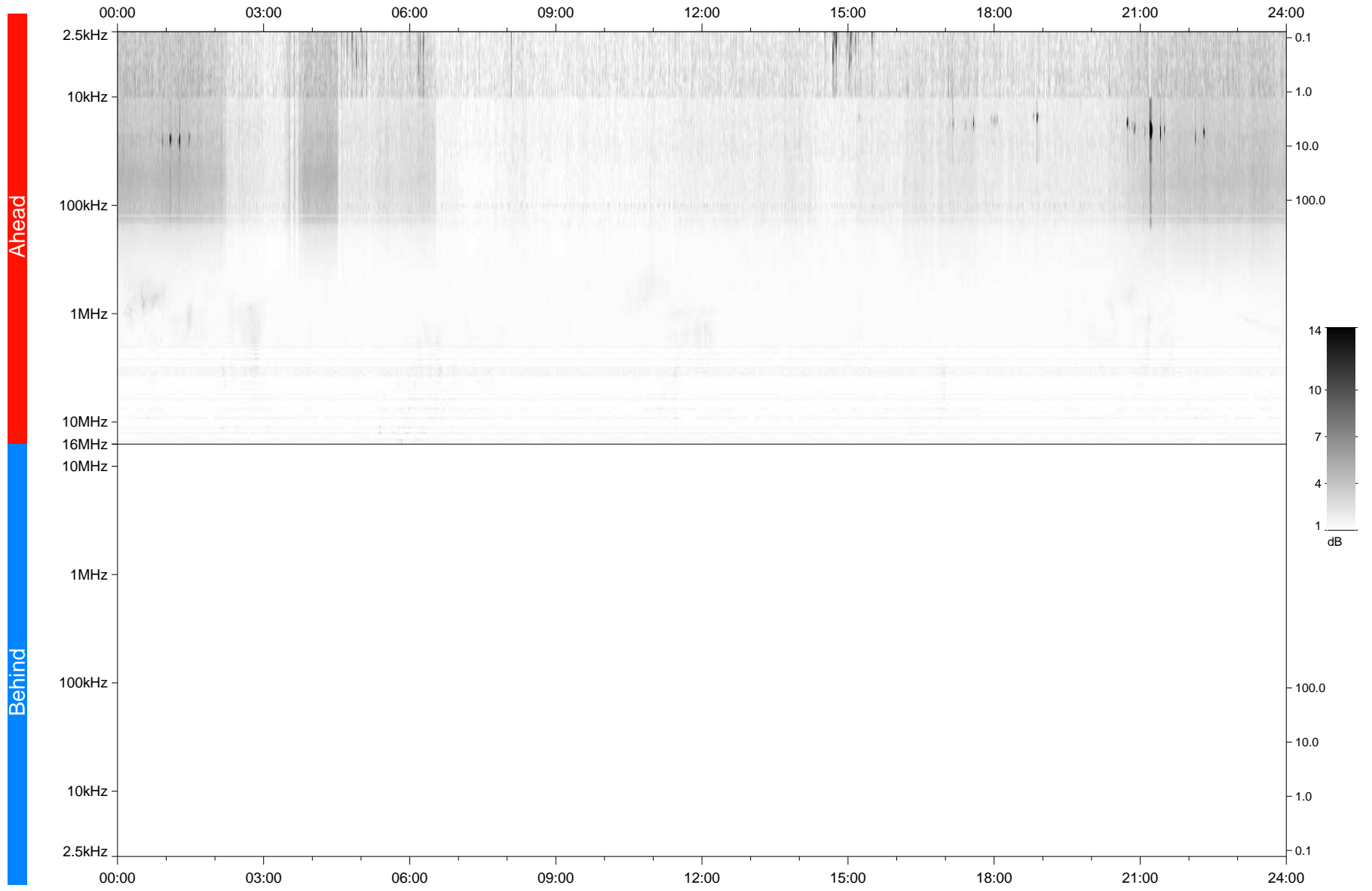


STEREO/WAVES Daily Summary - 02-Aug-2020 (DOY 215)

Ahead source file: swaves_ahead_2020_215_1_05.fin
Ahead PSE Angle: -66.5°



Behind PSE Angle: 60.0°
Behind source file: No STEREO-B data

Time (UTC)

file: stereo_swaves_daily-summary_gray_20200802_v04
made by: space.umn.edu on macOS with TDL 8.8.2 on 2022-10-03 16:39:16, with TLib V945 / dynspec V311