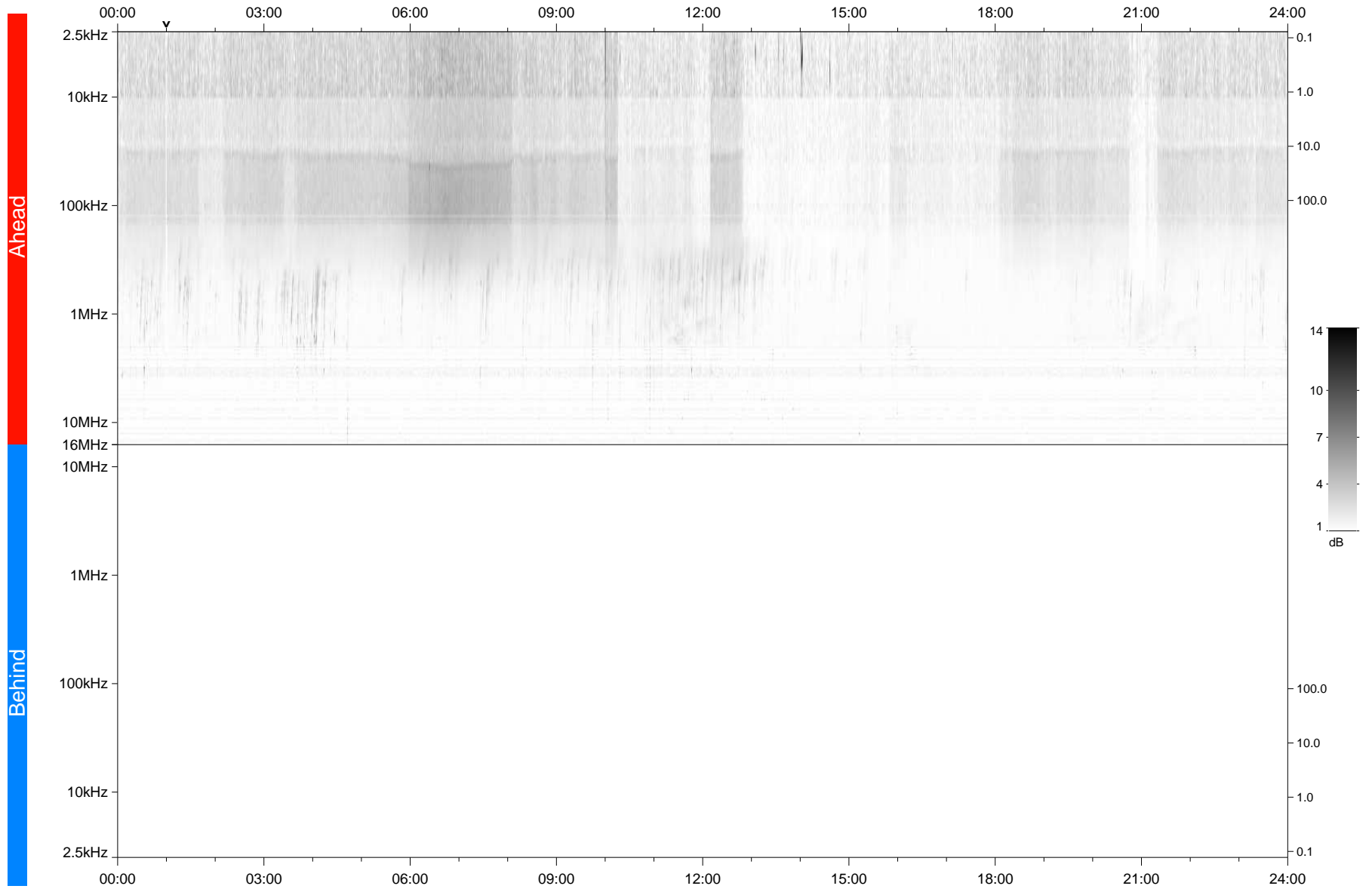


STEREO/WAVES Daily Summary - 28-Jul-2020 (DOY 210)

Ahead source file: swaves_ahead_2020_210_1_05.fin
Ahead PSE Angle: -66.9°



Behind PSE Angle: 60.4°
Behind source file: No STEREO-B data

Time (UTC)

file: stereo_swaves_daily-summary_gray_20200728_v04
made by: space.umn.edu on macOS with IDL 8.8.2 on 2022-10-03 16:31:47, with TMLib V945 / dynspec V311