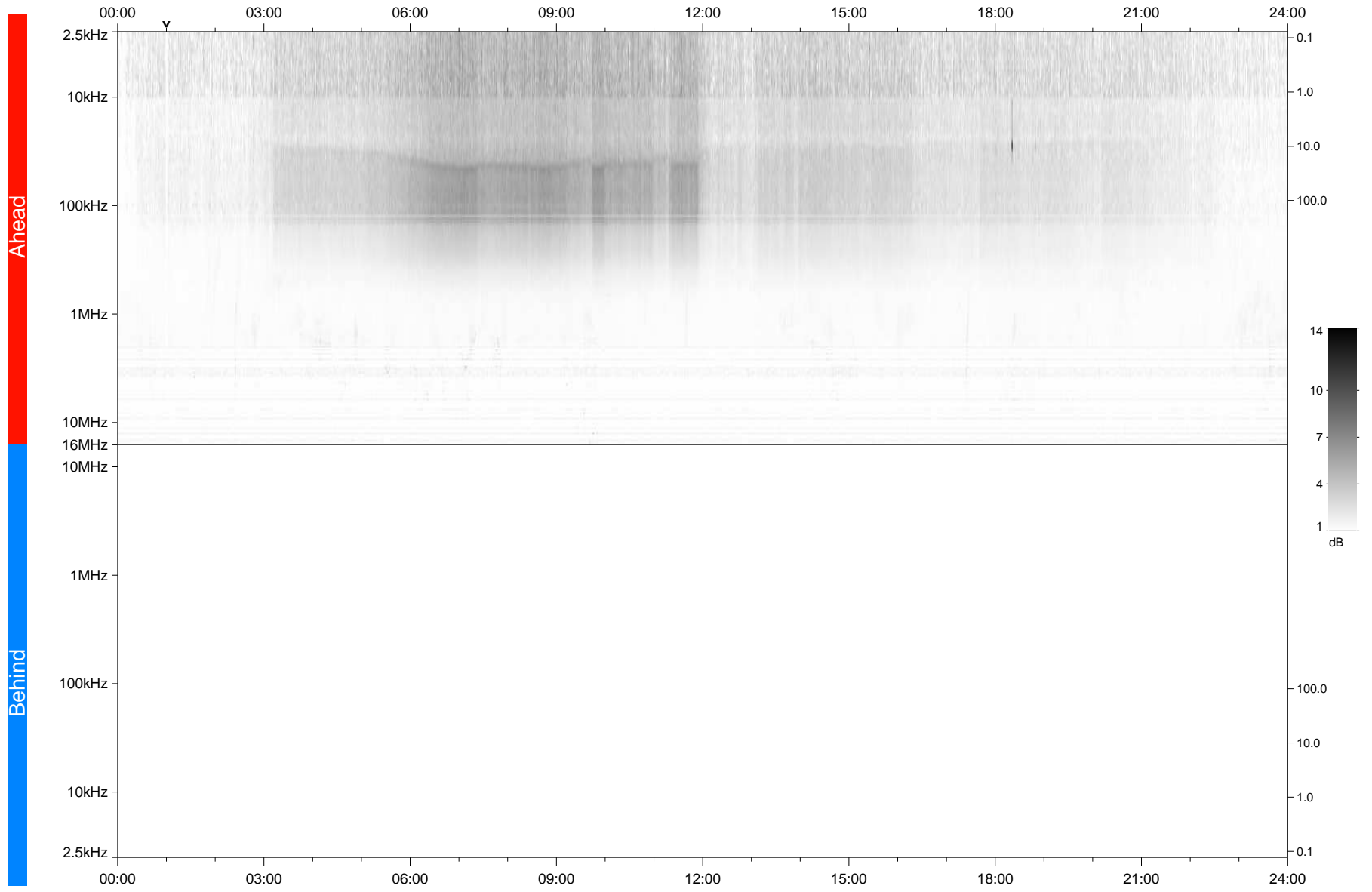


STEREO/WAVES Daily Summary - 26-Jul-2020 (DOY 208)

Ahead source file: swaves_ahead_2020_208_1_05.fin
Ahead PSE Angle: -67.1°



Behind PSE Angle: 60.5°
Behind source file: No STEREO-B data

Time (UTC)

file: stereo_swaves_daily-summary_gray_20200726_v03
made by: space.umn.edu on macOS with IDL 8.8.2 on 2022-09-15 15:38:10, with TMatlab V945 / dynspec V311