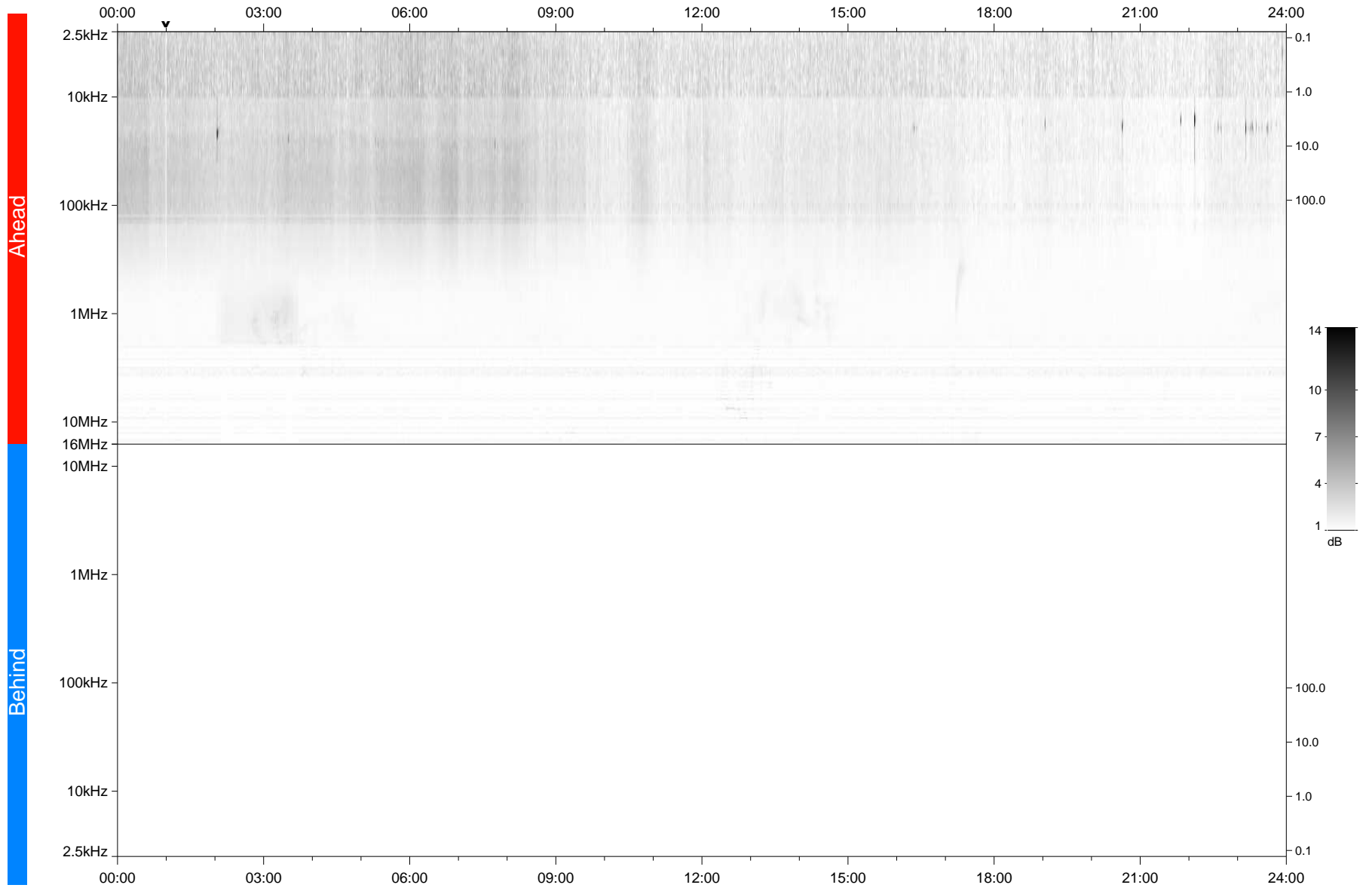


STEREO/WAVES Daily Summary - 24-Jun-2020 (DOY 176)

Ahead source file: swaves_ahead_2020_176_1_05.fin
Ahead PSE Angle: -70.1°



Behind PSE Angle: 63.0°
Behind source file: No STEREO-B data

Time (UTC)

file: stereo_swaves_daily-summary_gray_20200624_v04
made by: space.umn.edu on macOS with TDL 8.8.2 on 2022-10-03 15:40:51, with Tlib V945 / dynspec V311