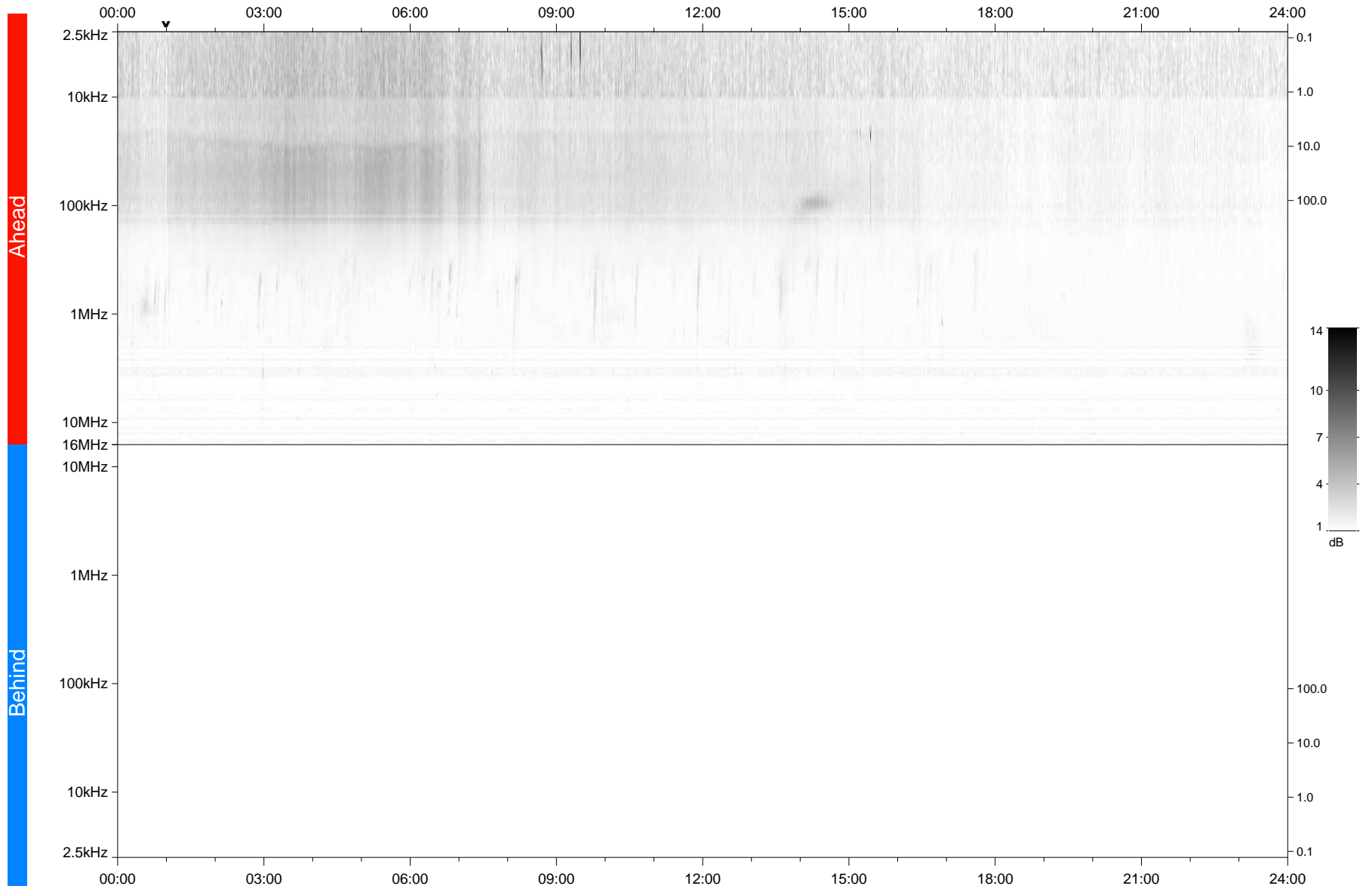


STEREO/WAVES Daily Summary - 06-Jun-2020 (DOY 158)

Ahead source file: swaves_ahead_2020_158_1_05.fin
Ahead PSE Angle: -71.6°



Behind PSE Angle: 64.7°
Behind source file: No STEREO-B data

Time (UTC)

file: stereo_swaves_daily-summary_gray_20200606_v03
made by: space.umn.edu on macOS with TDL 8.8.2 on 2022-09-15 14:29:49, with TLib V945 / dynspec V311