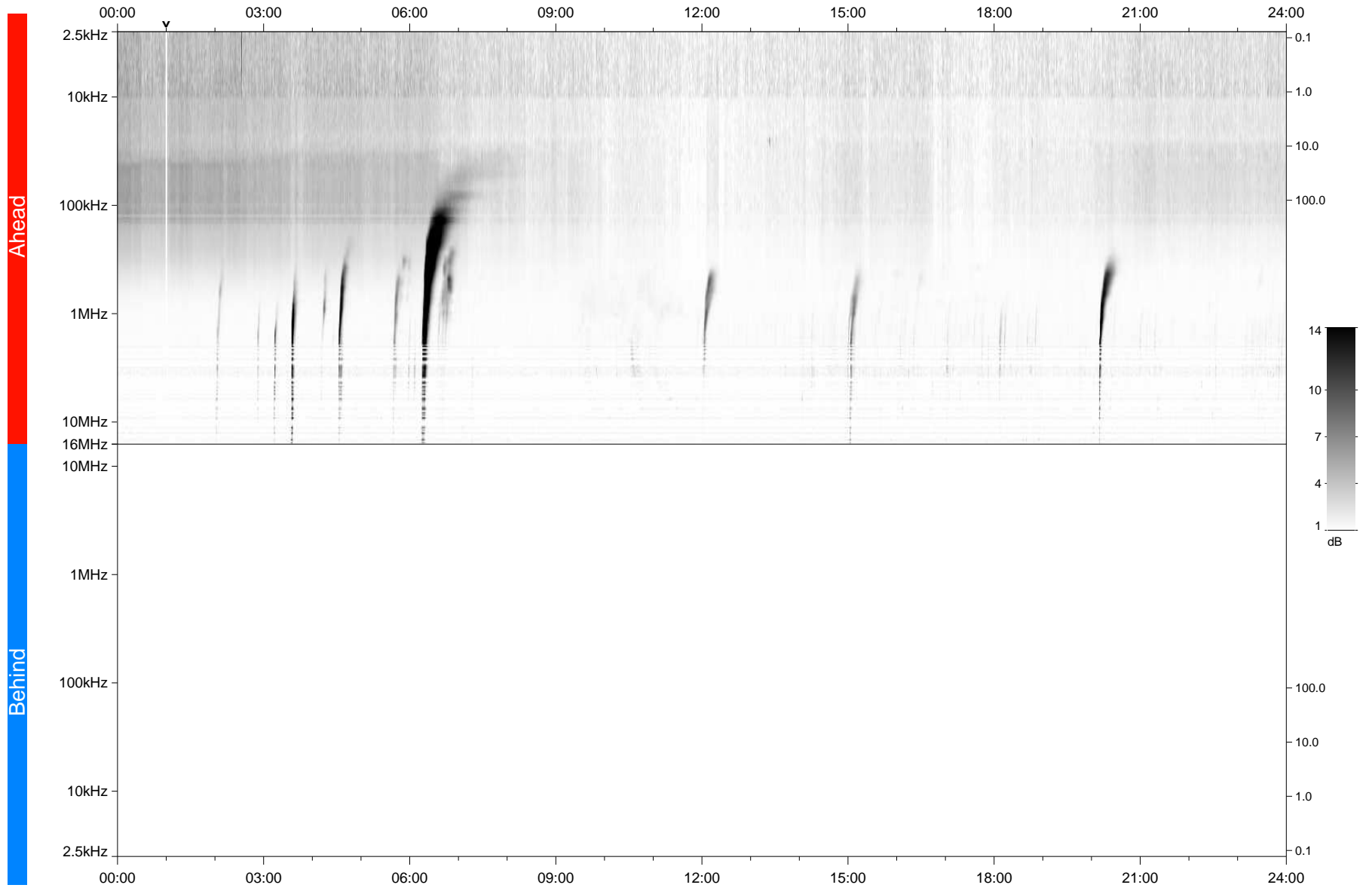


STEREO/WAVES Daily Summary - 02-Jun-2020 (DOY 154)

Ahead source file: swaves_ahead_2020_154_1_05.fin
Ahead PSE Angle: -71.8°



Behind PSE Angle: 65.2°
Behind source file: No STEREO-B data

Time (UTC)

file: stereo_swaves_daily-summary_gray_20200602_v04
made by: space.umn.edu on macOS with TDL 8.8.2 on 2022-10-03 15:07:51, with TLib V945 / dynspec V311