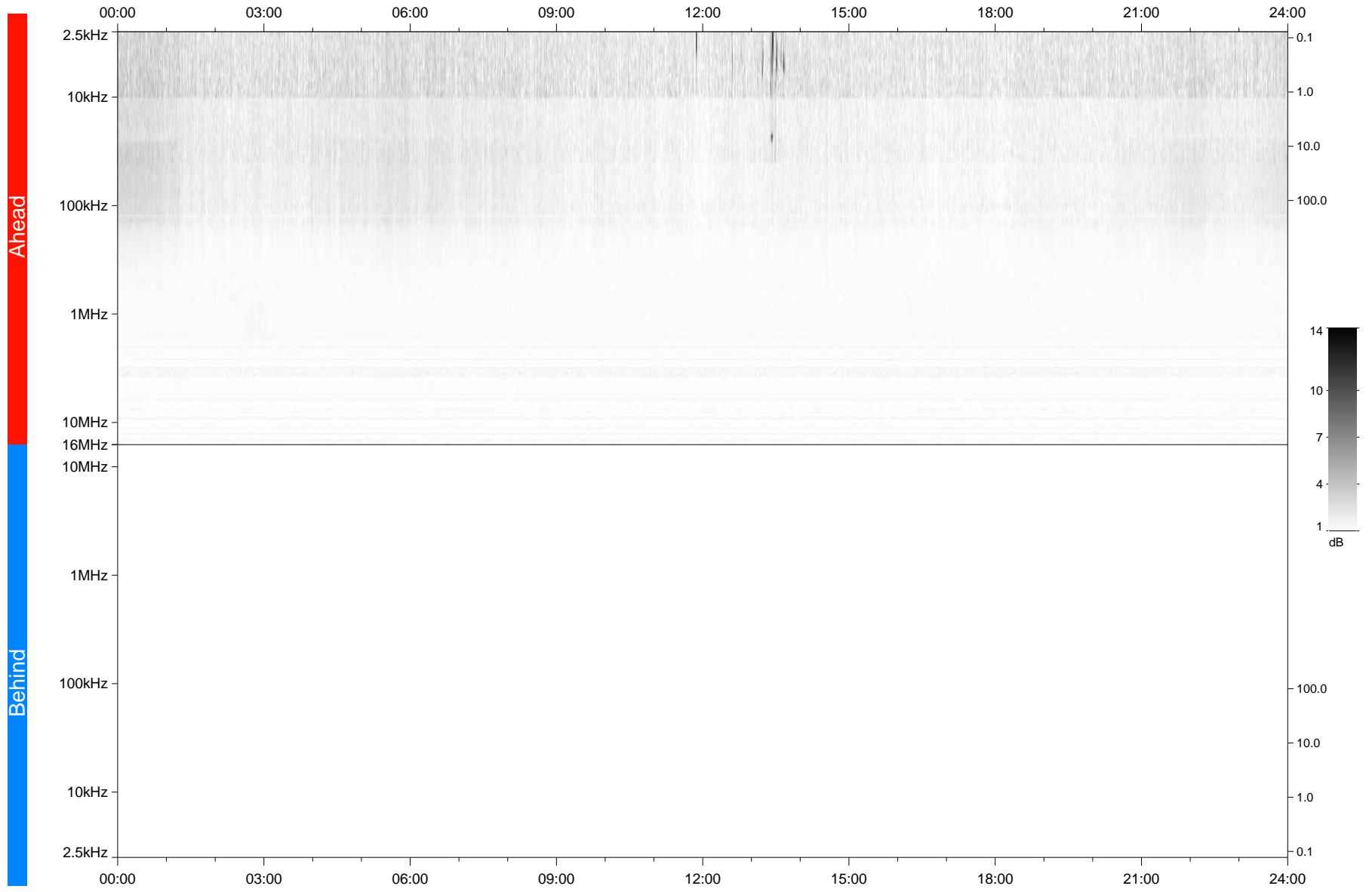


STEREO/WAVES Daily Summary - 10-May-2020 (DOY 131)

Ahead source file: swaves_ahead_2020_131_1_05.fin
Ahead PSE Angle: -73.6°



Behind PSE Angle: 67.7°
Behind source file: No STEREO-B data

Time (UTC)

file: stereo_swaves_daily-summary_gray_20200510_v04
made by: space.umn.edu on macOS with TDL 8.8.2 on 2022-10-03 14:33:22, with TLib V945 / dynspec V311