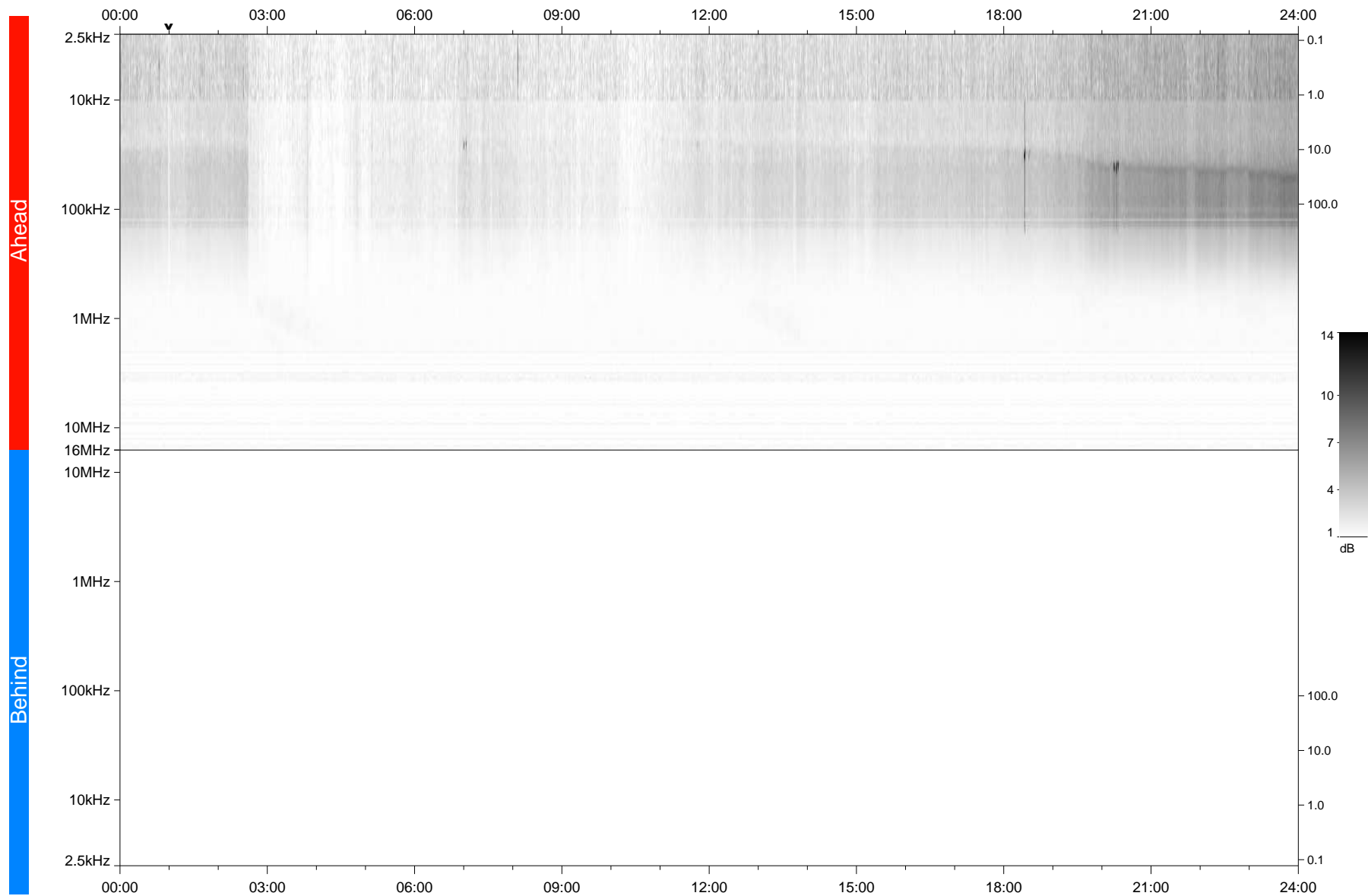


STEREO/WAVES Daily Summary - 19-Apr-2020 (DOY 110)

Ahead source file: swaves_ahead_2020_110_1_05.fin
Ahead PSE Angle: -74.9°



Behind PSE Angle: 70.1°
Behind source file: No STEREO-B data

Time (UTC)

file: stereo_swaves_daily-summary_gray_20200419_v04
made by: space.umn.edu on macOS with TDL 8.8.2 on 2022-10-03 14:01:51, with TLib V945 / dynspec V311