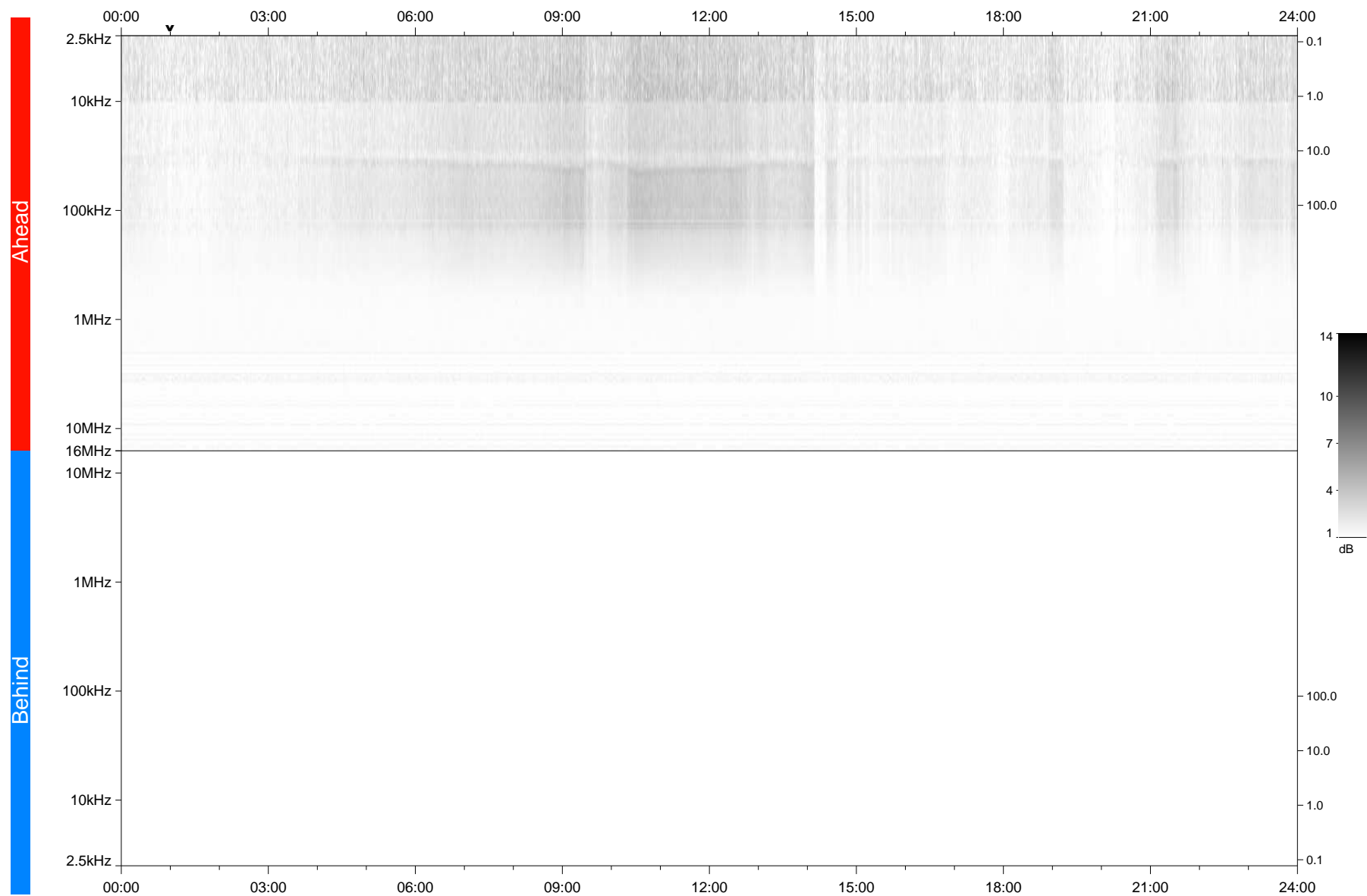


STEREO/WAVES Daily Summary - 29-Feb-2020 (DOY 060)

Ahead source file: swaves_ahead_2020_060_1_05.fin
Ahead PSE Angle: -77.1°



Behind PSE Angle: 75.8°
Behind source file: No STEREO-B data

Time (UTC)

file: stereo_swaves_daily-summary_gray_20200229_v04
made by: space.umn.edu on macOS with IDL 8.8.2 on 2022-10-03 12:46:56, with TMLib V945 / dynspec V311