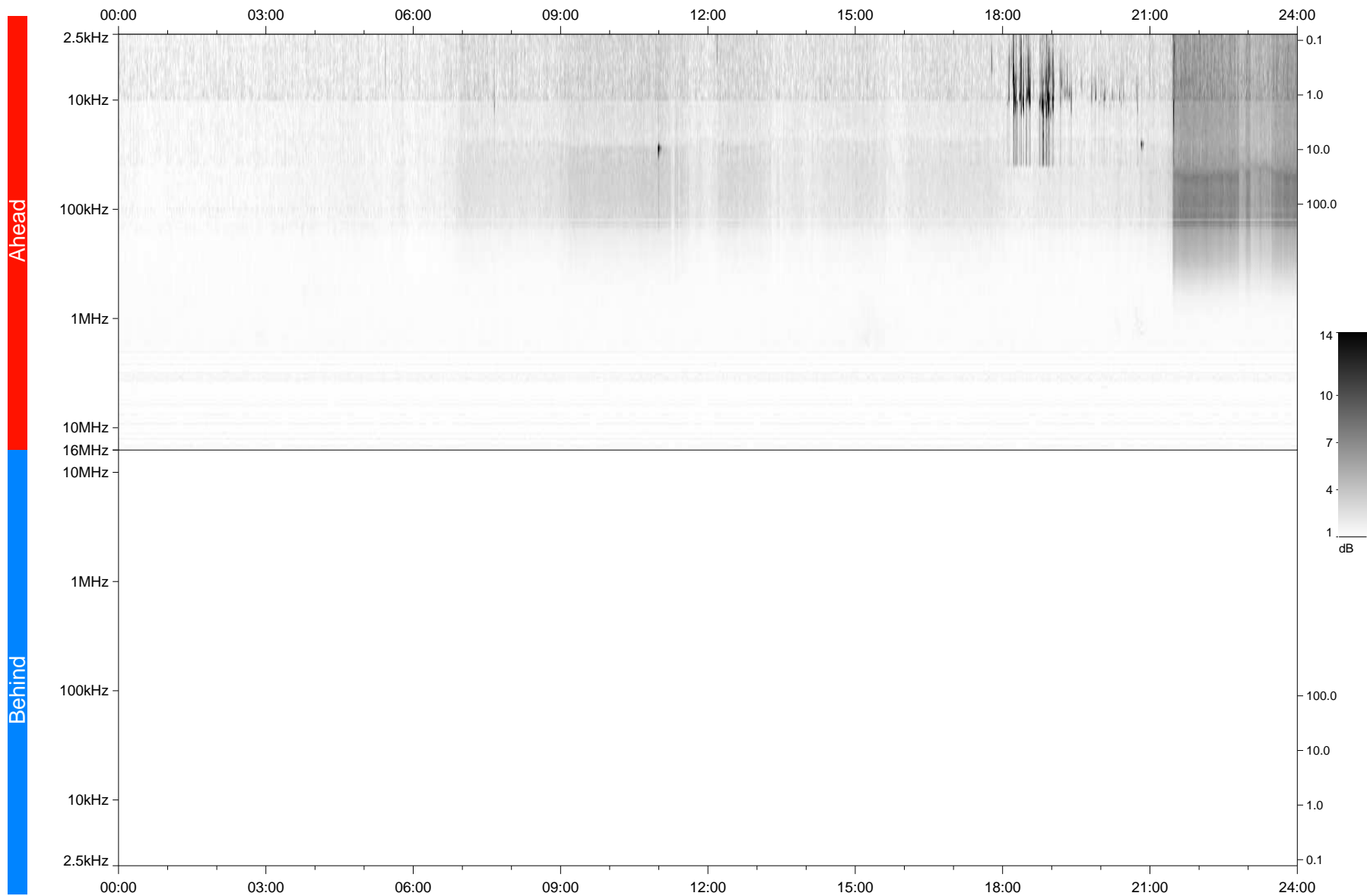


STEREO/WAVES Daily Summary - 02-Feb-2020 (DOY 033)

Ahead source file: swaves_ahead_2020_033_1_05.fin
Ahead PSE Angle: -77.6°



Behind PSE Angle: 78.4°
Behind source file: No STEREO-B data

Time (UTC)

file: stereo_swaves_daily-summary_gray_20200202_v03
made by: space.umn.edu on macOS with TDL 8.8.2 on 2022-09-15 11:39:06, with Tlib V945 / dynspec V311