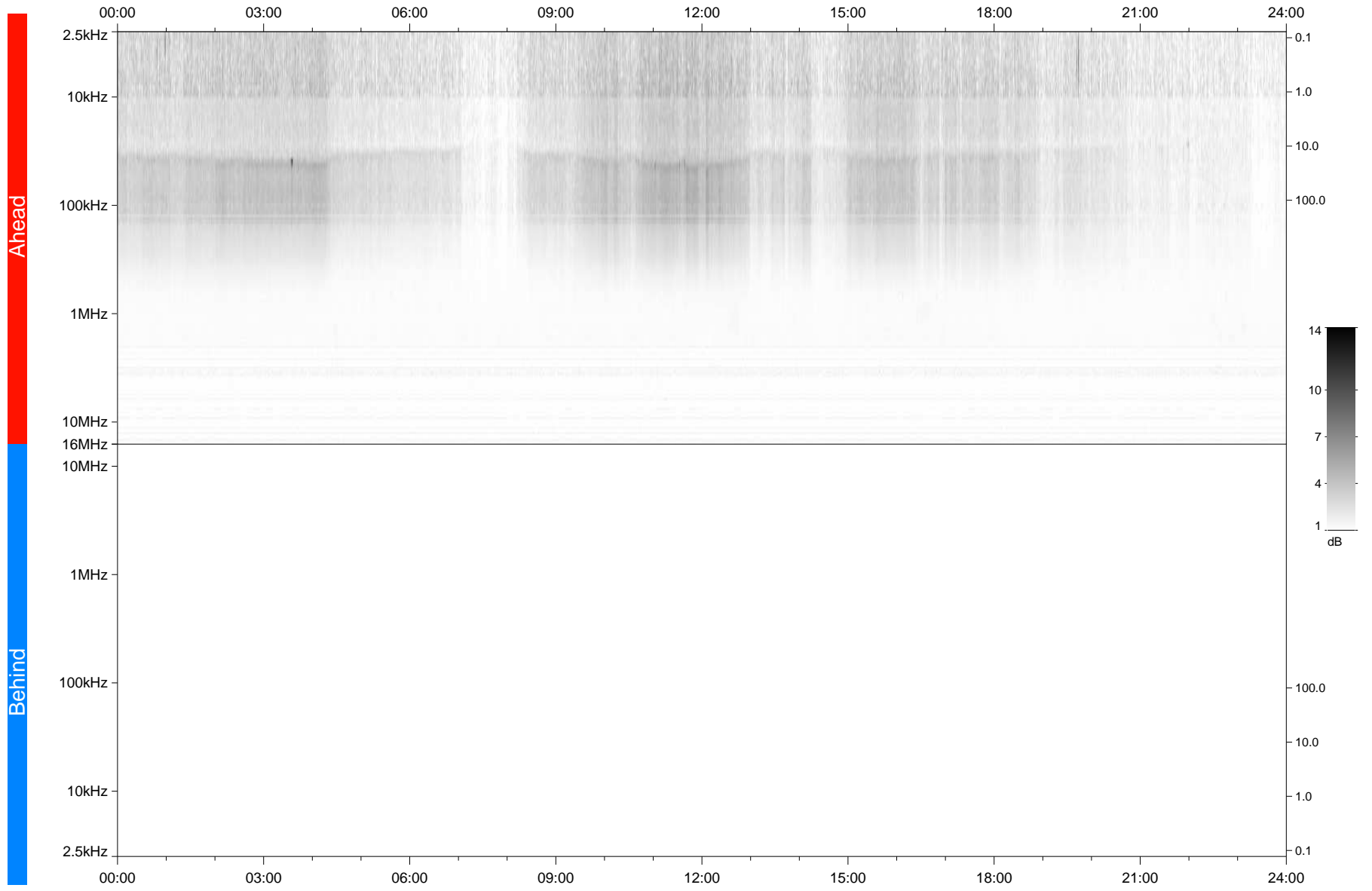


STEREO/WAVES Daily Summary - 17-Dec-2018 (DOY 351)

Ahead source file: swaves_ahead_2018_351_1_05.fin
Ahead PSE Angle: -101.0°



Behind PSE Angle: 104.2°
Behind source file: No STEREO-B data

Time (UTC)

file: stereo_swaves_daily-summary_gray_20181217_v04
made by: space.umn.edu on macOS with TDL 8.8.2 on 2022-10-06 15:59:25, with TMLib V945 / dynspec V311