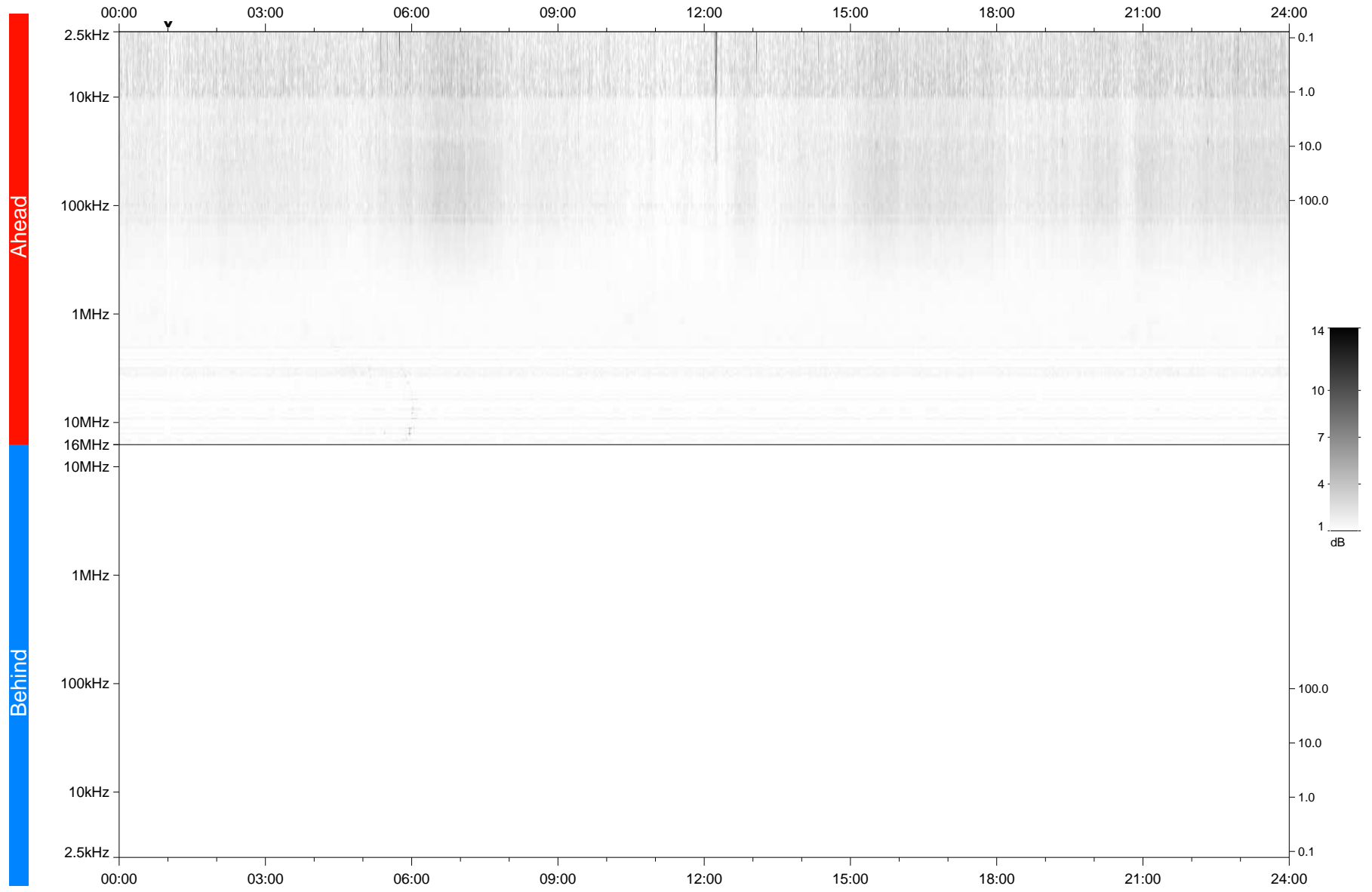


STEREO/WAVES Daily Summary - 26-Nov-2018 (DOY 330)

Ahead source file: swaves Ahead_2018_330_1_05.fin
Ahead PSE Angle: -101.8°



Behind PSE Angle: 105.1°
Behind source file: No STEREO-B data

Time (UTC)

file: stereo_swaves_daily-summary_gray_20181126_v04
made by: space.umn.edu on macOS with TDL 8.8.2 on 2022-10-06 15:27:48, with TLib V945 / dynspec V311