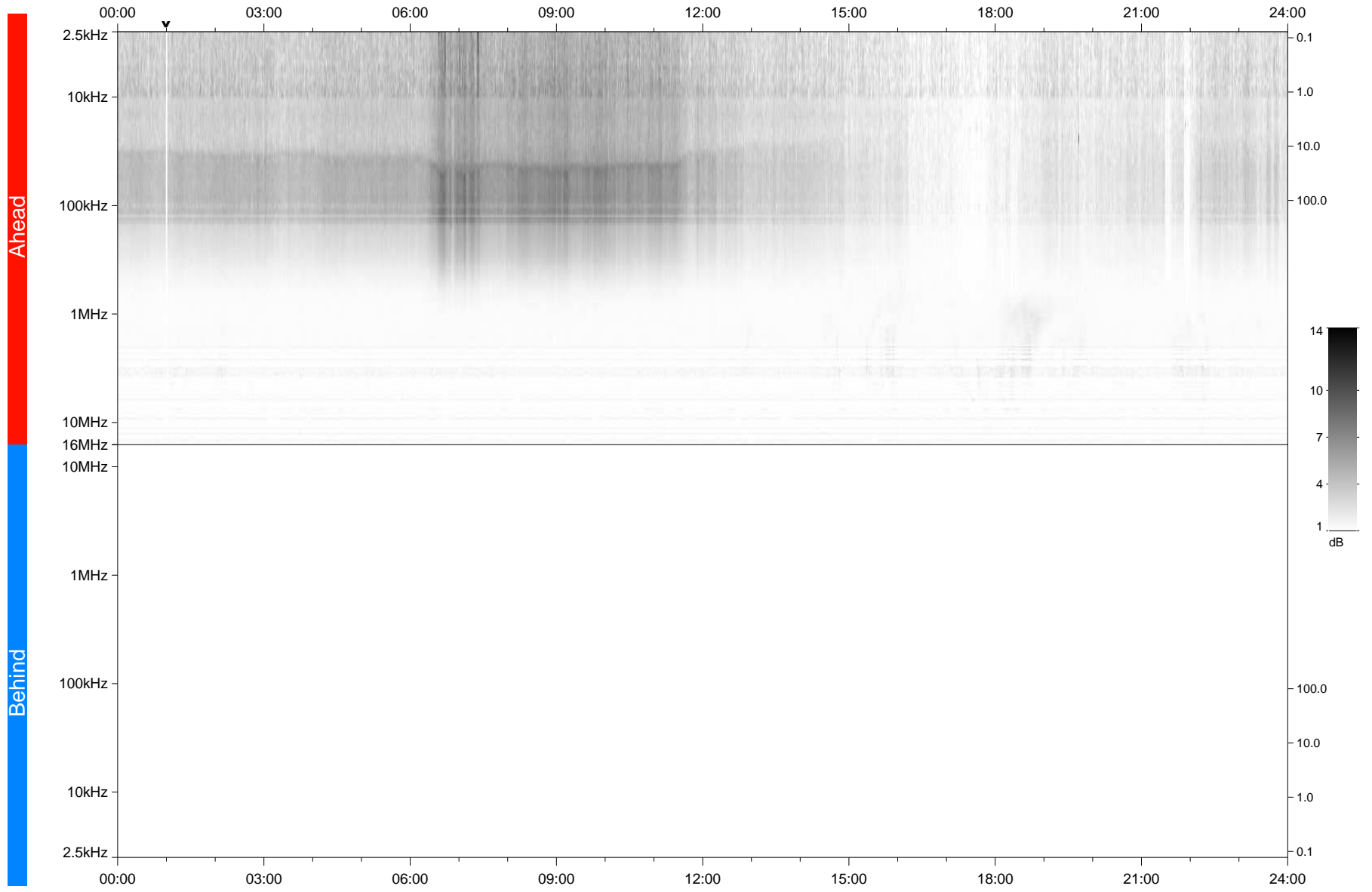


STEREO/WAVES Daily Summary - 04-Nov-2018 (DOY 308)

Ahead source file: swaves_ahead_2018_308_1_05.fin
Ahead PSE Angle: -102.9°



Behind PSE Angle: 105.5°
Behind source file: No STEREO-B data

Time (UTC)

file: stereo_swaves_daily-summary_gray_20181104_v04
made by: space.umn.edu on macOS with TDL 8.8.2 on 2022-10-06 14:54:51, with TLib V945 / dynspec V311