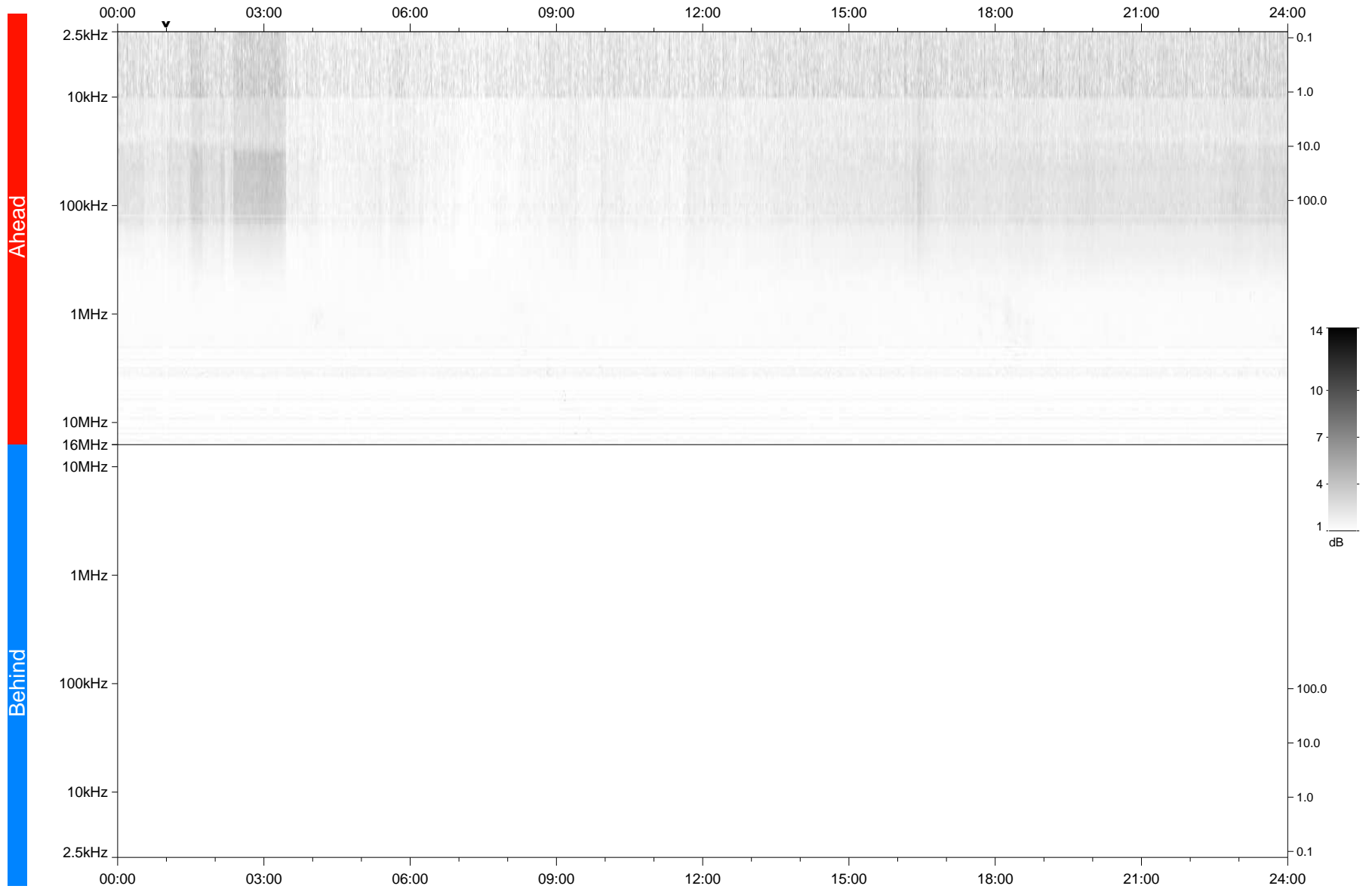


STEREO/WAVES Daily Summary - 25-Oct-2018 (DOY 298)

Ahead source file: swaves_ahead_2018_298_1_05.fin
Ahead PSE Angle: -103.5°



Behind PSE Angle: 105.5°
Behind source file: No STEREO-B data

Time (UTC)

file: stereo_swaves_daily-summary_gray_20181025_v04
made by: space.umn.edu on macOS with TDL 8.8.2 on 2022-10-06 14:39:50, with TLib V945 / dynspec V311