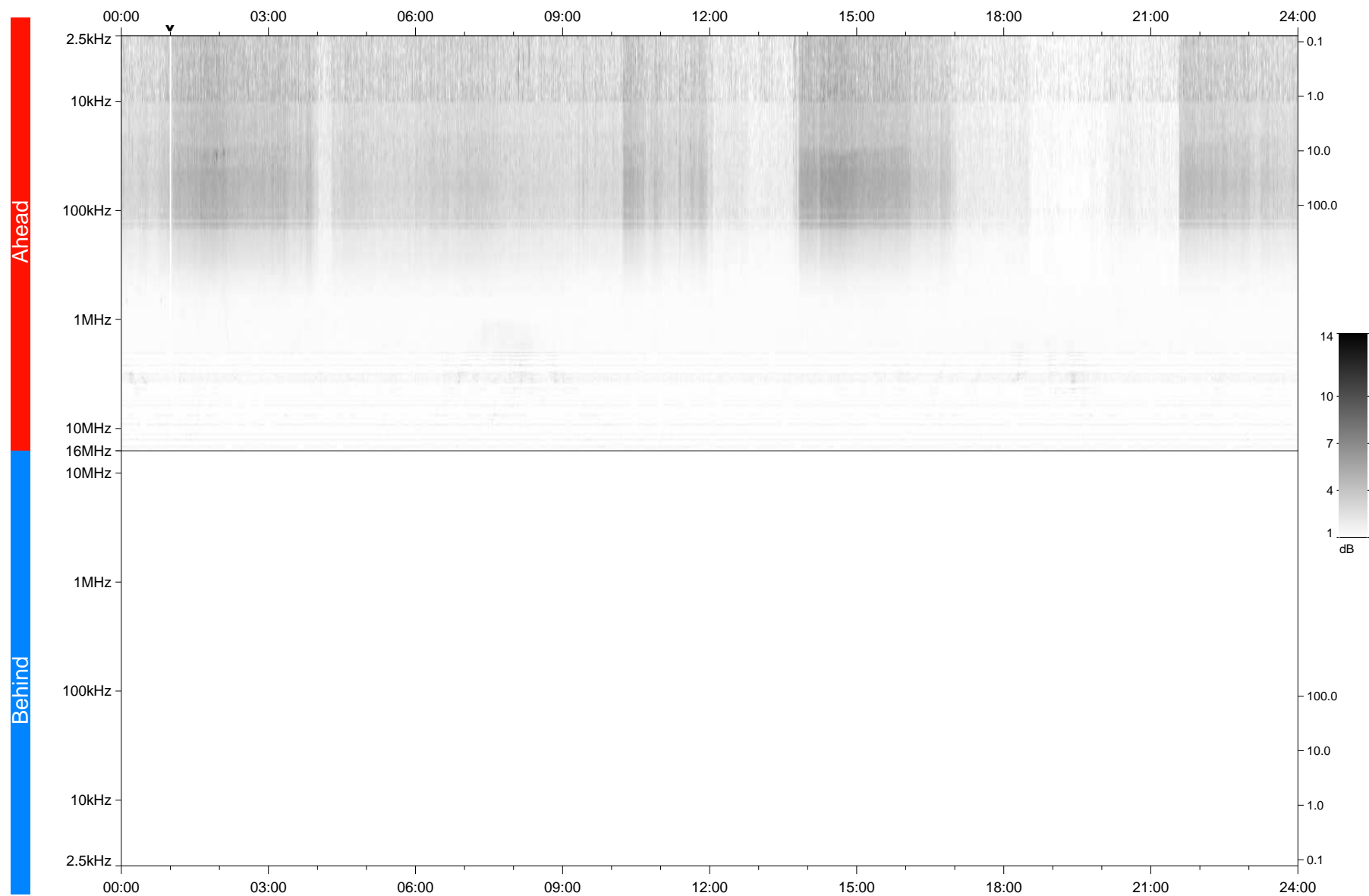


STEREO/WAVES Daily Summary - 15-Oct-2018 (DOY 288)

Ahead source file: swaves_ahead_2018_288_1_06.fin
Ahead PSE Angle: -104.1°



Behind PSE Angle: 105.4°
Behind source file: No STEREO-B data

Time (UTC)

file: stereo_swaves_daily-summary_gray_20181015_v04
made by: space.umn.edu on macOS with IDL 8.8.2 on 2022-10-06 14:24:54, with TLib V945 / dynspec V311