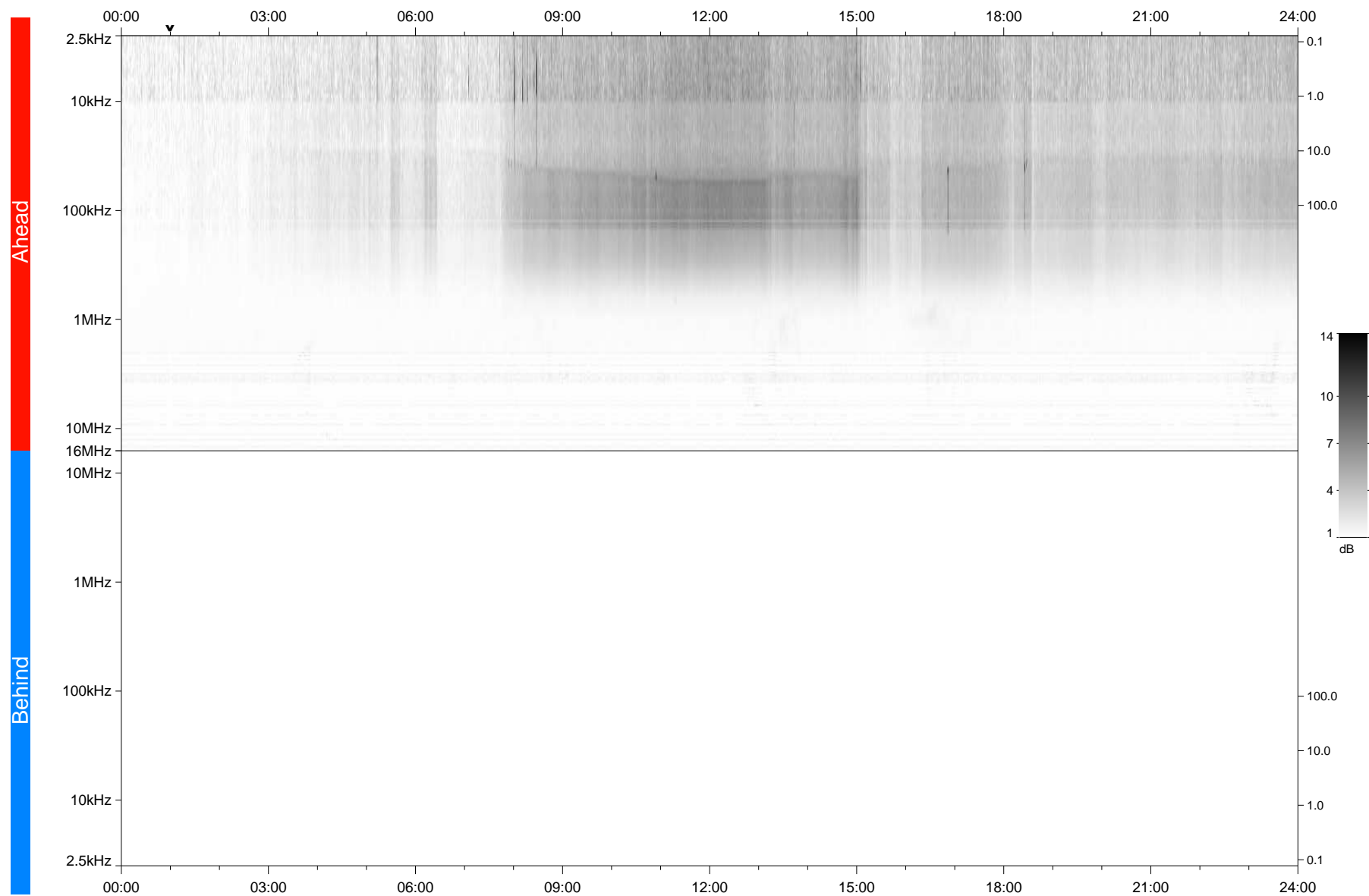


STEREO/WAVES Daily Summary - 05-Oct-2018 (DOY 278)

Ahead source file: swaves_ahead_2018_278_1_05.fin
Ahead PSE Angle: -104.8°



Behind PSE Angle: 105.2°
Behind source file: No STEREO-B data

Time (UTC)

file: stereo_swaves_daily-summary_gray_20181005_v04
made by: space.umn.edu on macOS with TDL 8.8.2 on 2022-10-06 14:09:56, with Tlib V945 / dynspec V311