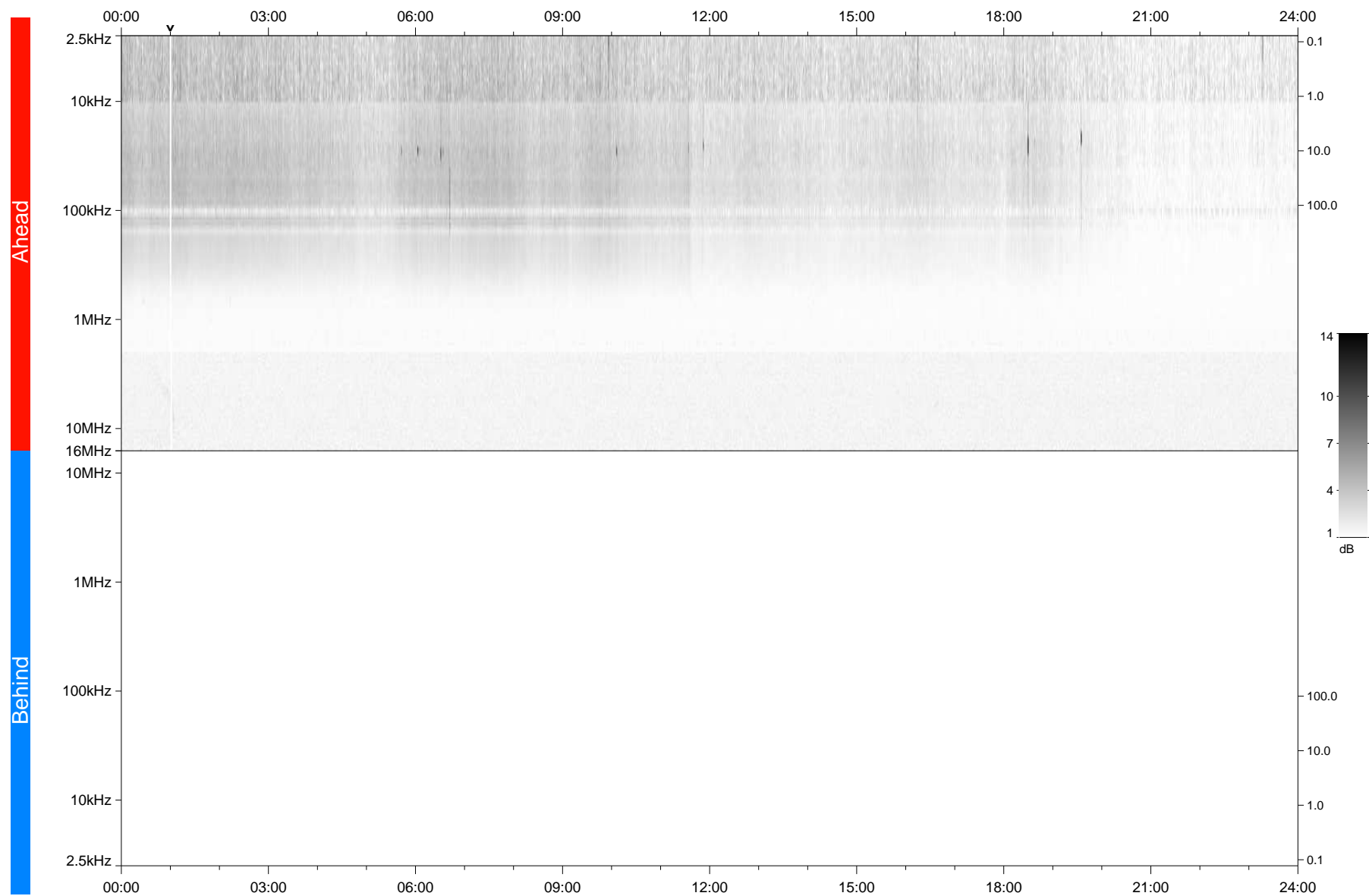


STEREO/WAVES Daily Summary - 12-Apr-2018 (DOY 102)

Ahead source file: swaves_ahead_2018_102_1_05.fin
Ahead PSE Angle: -118.1°



Behind PSE Angle: 111.7°
Behind source file: No STEREO-B data

Time (UTC)

file: stereo_swaves_daily-summary_gray_20180412_v04
made by: space.umn.edu on macOS with IDL 8.8.2 on 2022-10-06 09:54:54, with TMLib V945 / dynspec V311