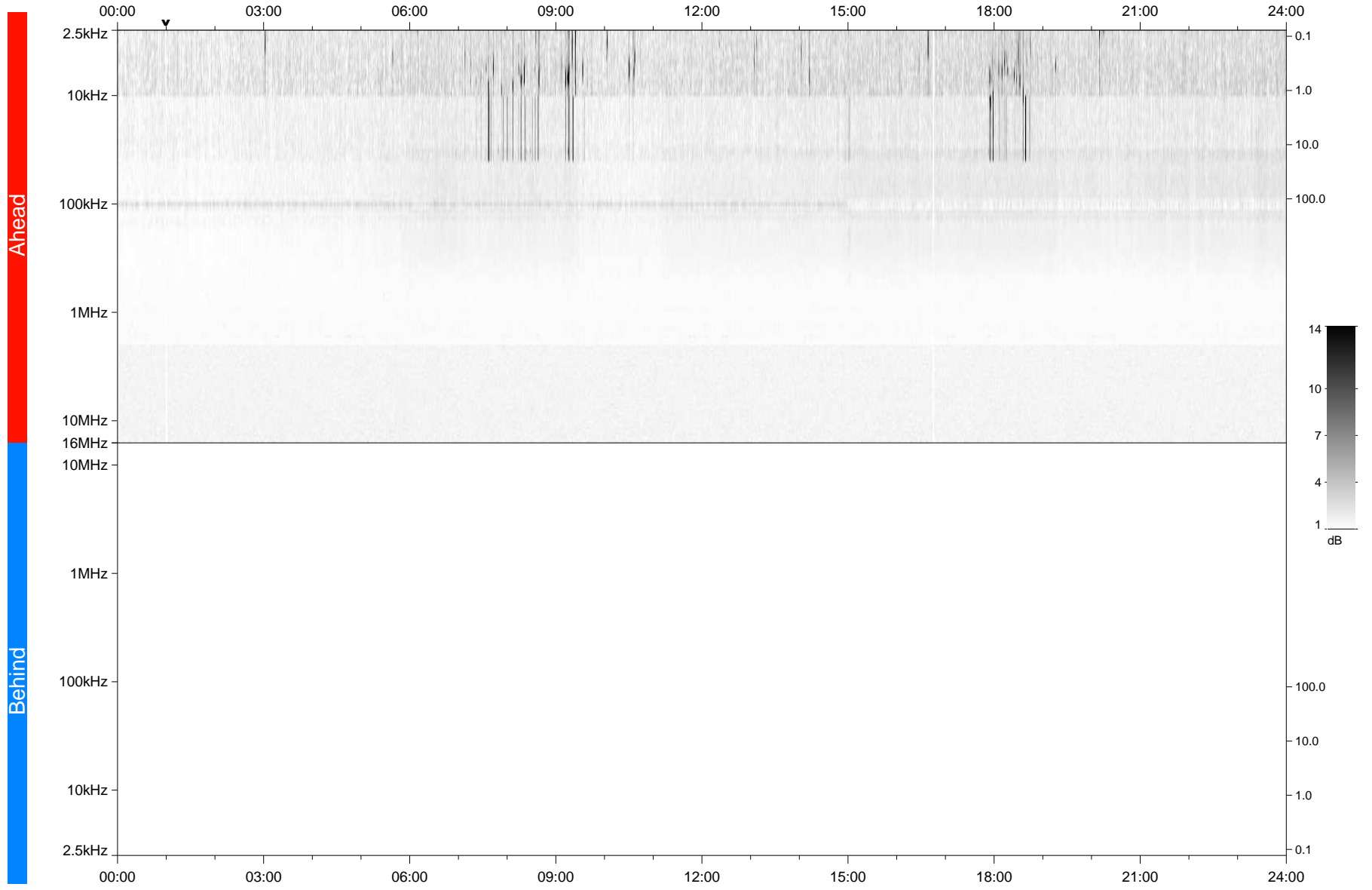


STEREO/WAVES Daily Summary - 10-Apr-2018 (DOY 100)

Ahead source file: swaves_ahead_2018_100_1_05.fin
Ahead PSE Angle: -118.2°



Behind PSE Angle: 111.9°
Behind source file: No STEREO-B data

Time (UTC)

file: stereo_swaves_daily-summary_gray_20180410_v04
made by: space.umn.edu on macOS with IDL 8.8.2 on 2022-10-06 09:51:59, with TLib V945 / dynspec V311