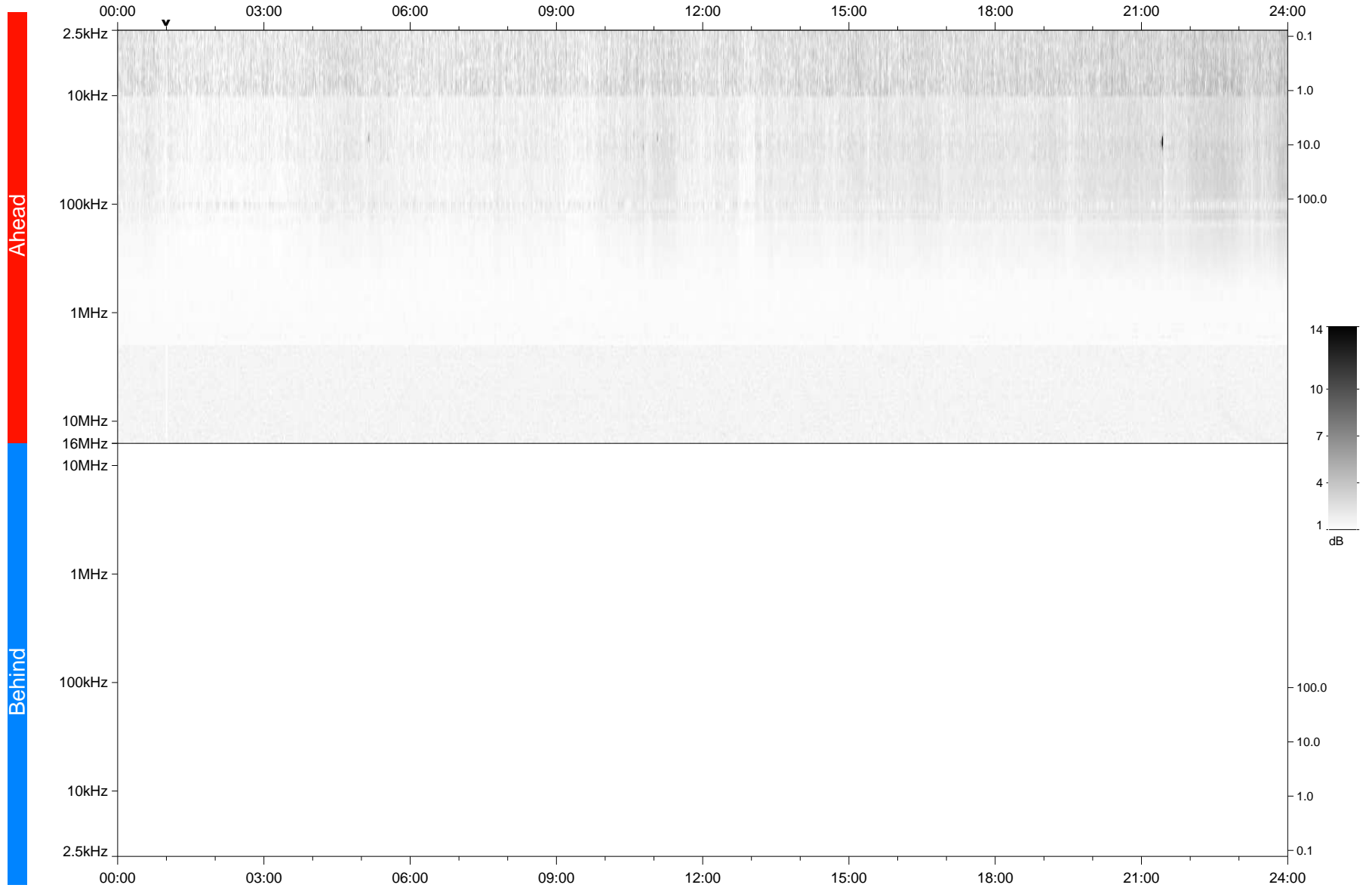


STEREO/WAVES Daily Summary - 25-Feb-2018 (DOY 056)

Ahead source file: swaves_ahead_2018_056_1_05.fin
Ahead PSE Angle: -120.2°



Behind PSE Angle: 118.1°
Behind source file: No STEREO-B data

Time (UTC)

file: stereo_swaves_daily-summary_gray_20180225_v04
made by: space.umn.edu on macOS with IDL 8.8.2 on 2022-10-06 08:48:17, with TMLib V945 / dynspec V311