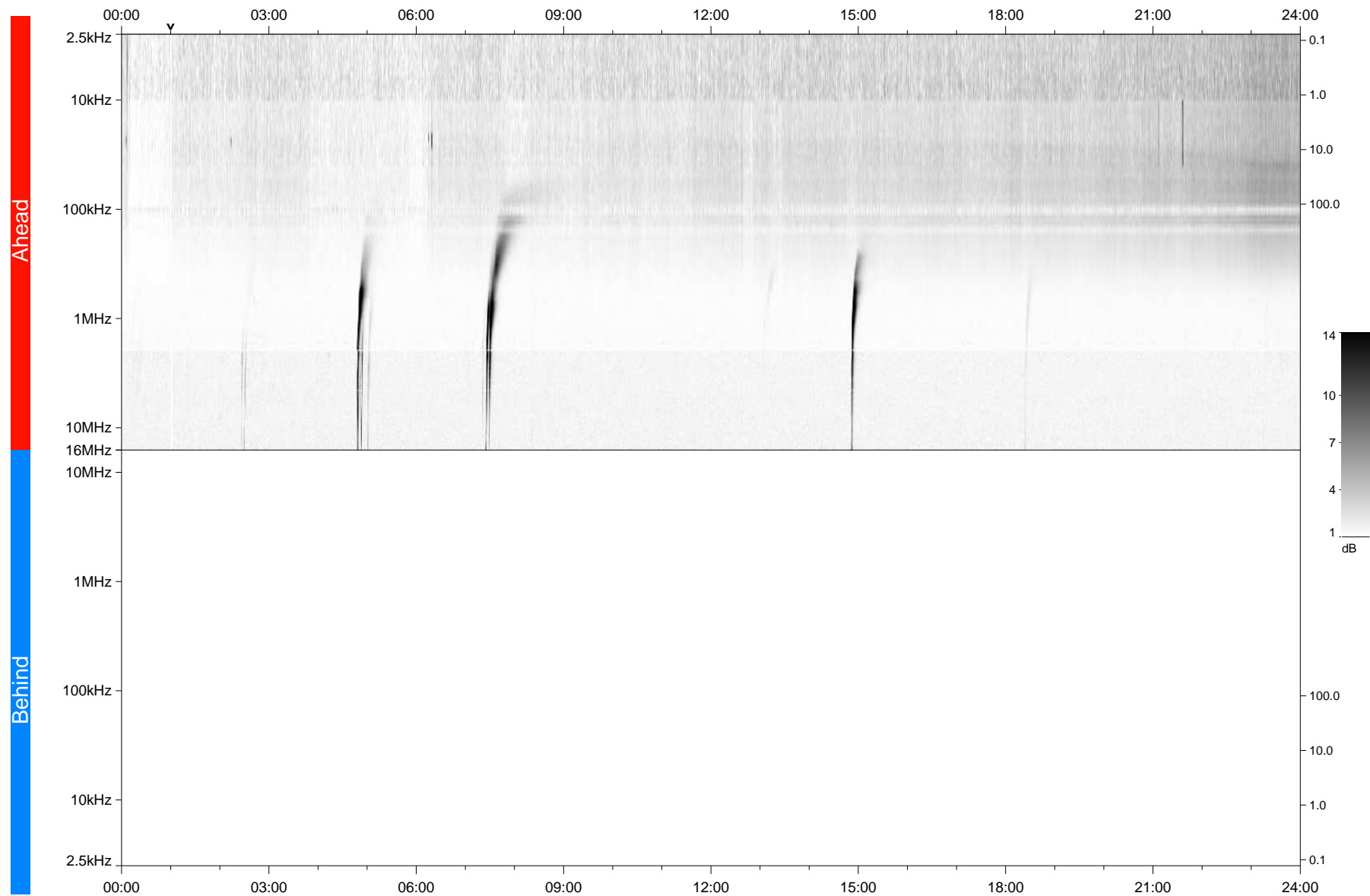


STEREO/WAVES Daily Summary - 05-Feb-2018 (DOY 036)

Ahead source file: swaves_ahead_2018_036_1_05.fin
Ahead PSE Angle: -121.0°



Behind PSE Angle: 120.9°
Behind source file: No STEREO-B data

Time (UTC)

file: stereo_swaves_daily-summary_gray_20180205_v04
made by: space.umn.edu on macOS with TDL 8.8.2 on 2022-10-06 08:19:20, with Tlib V945 / dynspec V311