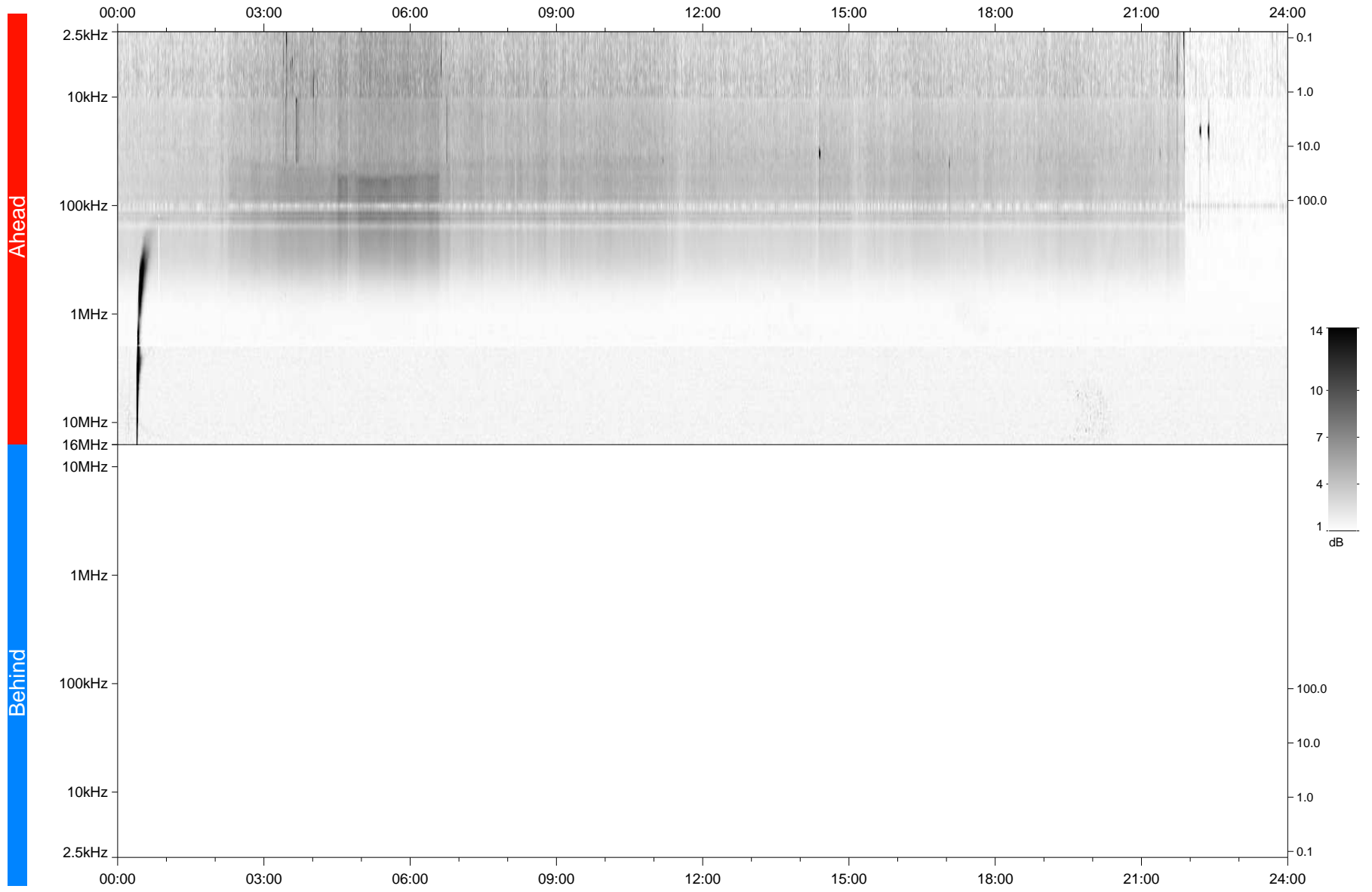


STEREO/WAVES Daily Summary - 17-Nov-2017 (DOY 321)

Ahead source file: swaves_ahead_2017_321_1_05.fin
Ahead PSE Angle: -124.1°



Behind PSE Angle: 128.7°
Behind source file: No STEREO-B data

Time (UTC)

file: stereo_swaves_daily-summary_gray_20171117_v04
made by: space.umn.edu on macOS with IDL 8.8.2 on 2022-10-08 17:20:49, with TMatlab V945 / dynspec V311