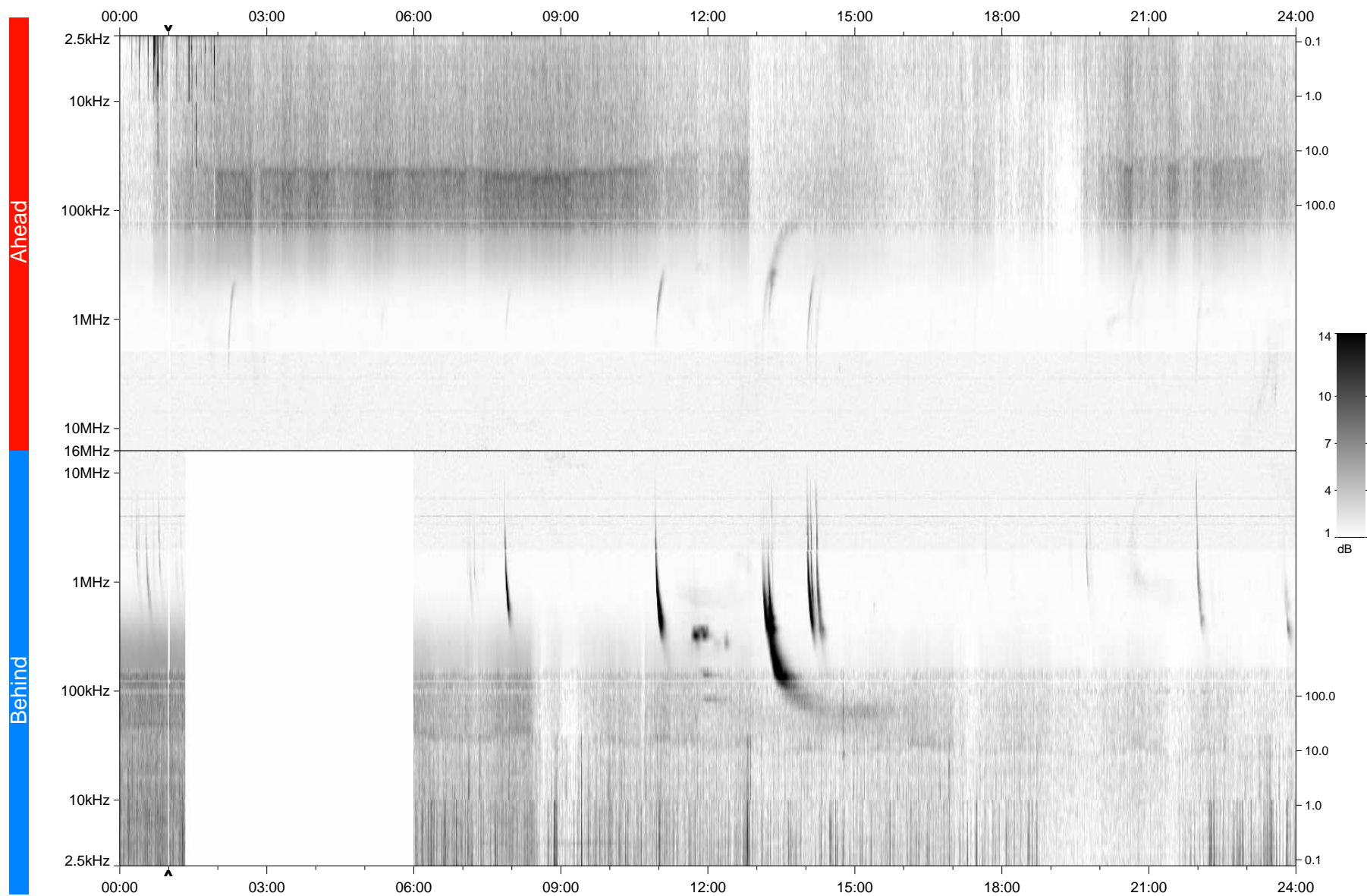


STEREO/WAVES Daily Summary - 26-Oct-2012 (DOY 300)

Ahead source file: swaves_ahead_2012_300_1_04.fin
Ahead PSE Angle: 126.8°



Behind PSE Angle: -121.3°
Behind source file: swaves_behind_2012_300_1_04.fin

Time (UTC)

file: stereo_swaves_daily-summary_gray_20121026_v04
made by: space.umn.edu on macOS with TDL 8.8.2 on 2022-10-14 15:09:16, with Tlib V945 / dynspec V311