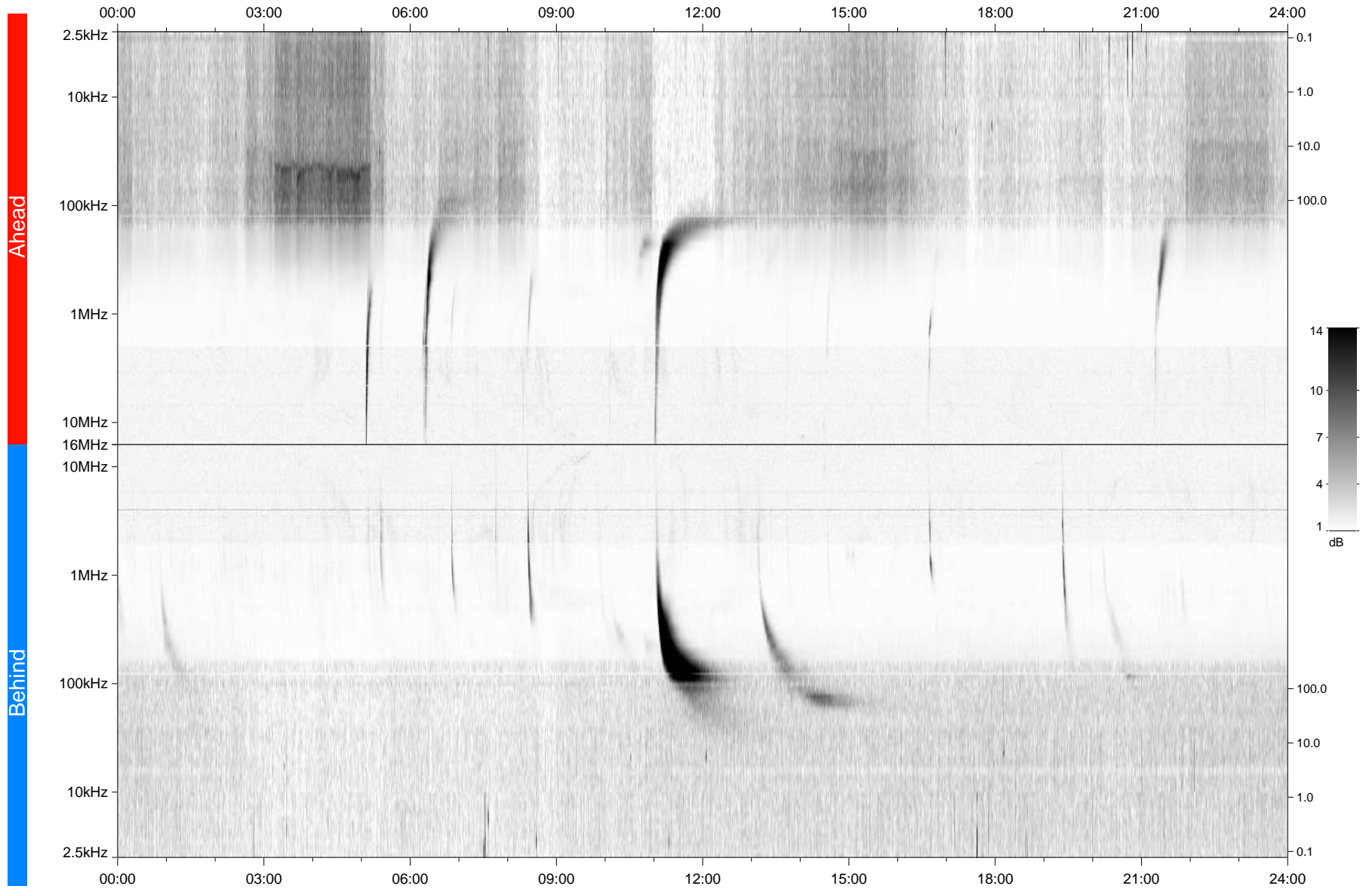


STEREO/WAVES Daily Summary - 27-Nov-2011 (DOY 331)

Ahead source file: swaves_ahead_2011_331_1_04.fin
Ahead PSE Angle: 106.3°



Behind PSE Angle: -105.6°
Behind source file: swaves_behind_2011_331_1_04.fin

Time (UTC)

file: stereo_swaves_daily-summary_gray_20111127_v04
made by: space.umn.edu on macOS with TDL 8.8.2 on 2022-10-15 16:41:57, with Tlib V945 / dynspec V311