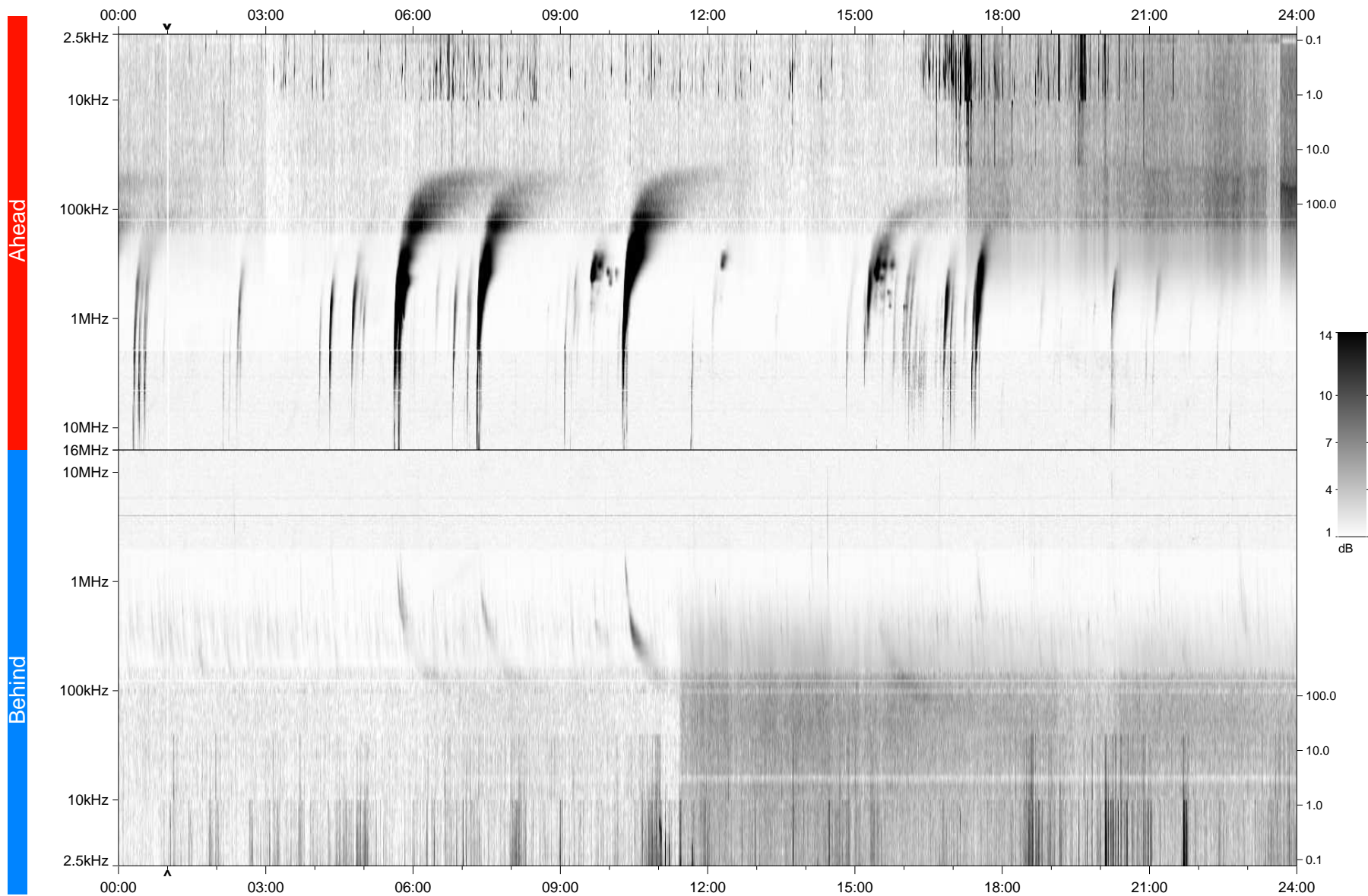


STEREO/WAVES Daily Summary - 07-Oct-2011 (DOY 280)

Ahead source file: swaves_ahead_2011_280_1_05.fin
Ahead PSE Angle: 104.5°



Behind PSE Angle: -98.2°
Behind source file: swaves_behind_2011_280_1_04.fin

Time (UTC)

file: stereo_swaves_daily-summary_gray_20111007_v04
made by: space.umn.edu on macOS with TDL 8.8.2 on 2022-10-15 14:18:22, with Tlib V945 / dynspec V311