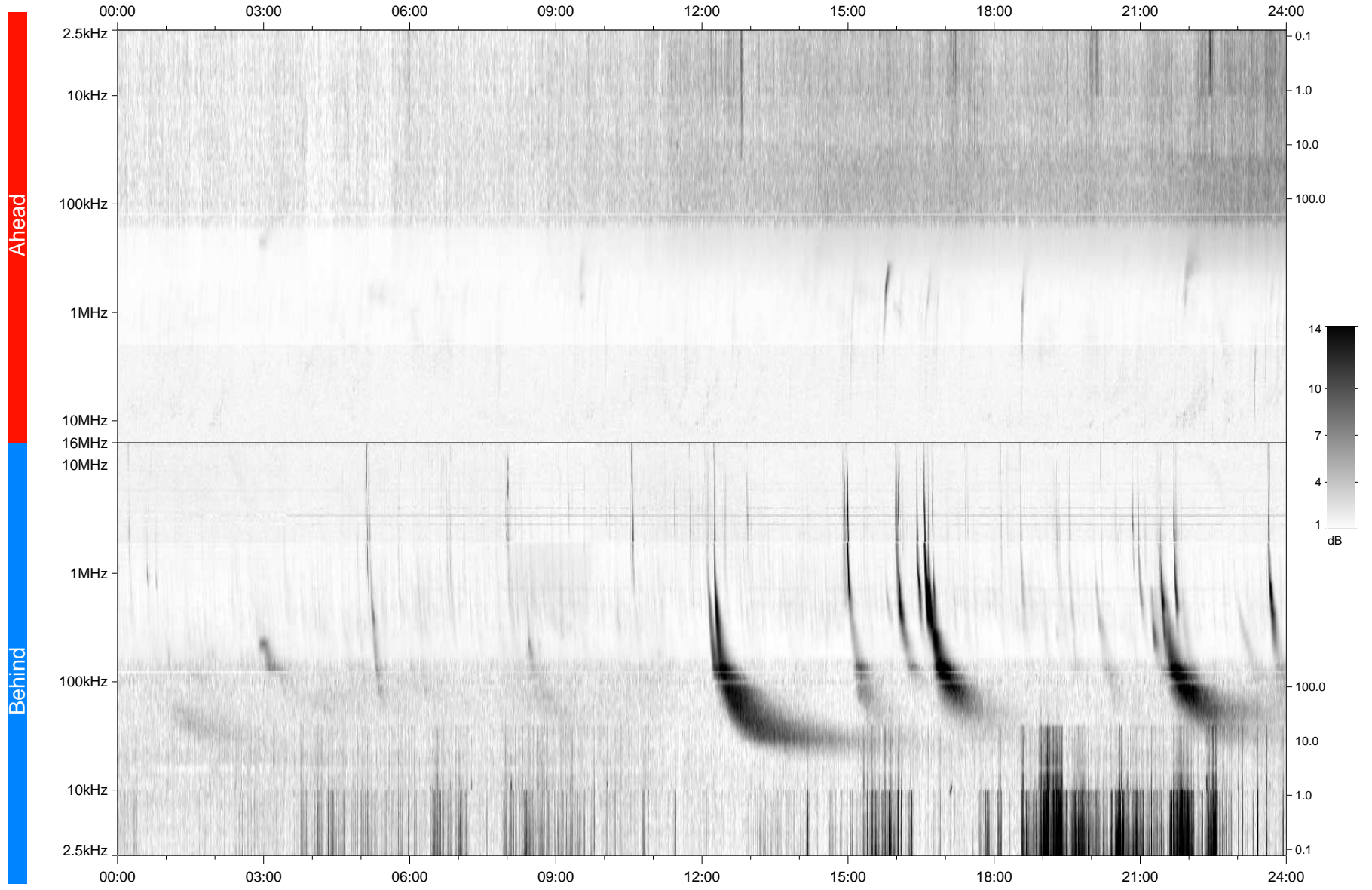


STEREO/WAVES Daily Summary - 01-Aug-2011 (DOY 213)

Ahead source file: swaves_ahead_2011_213_1_04.fin
Ahead PSE Angle: 100.0°



Behind PSE Angle: -92.8°
Behind source file: swaves_behind_2011_213_1_04.fin

Time (UTC)

file: stereo_swaves_daily-summary_gray_20110801_v04
made by: space.umn.edu on macOS with TDL 8.8.2 on 2022-10-15 11:08:22, with Tlib V945 / dynspec V311