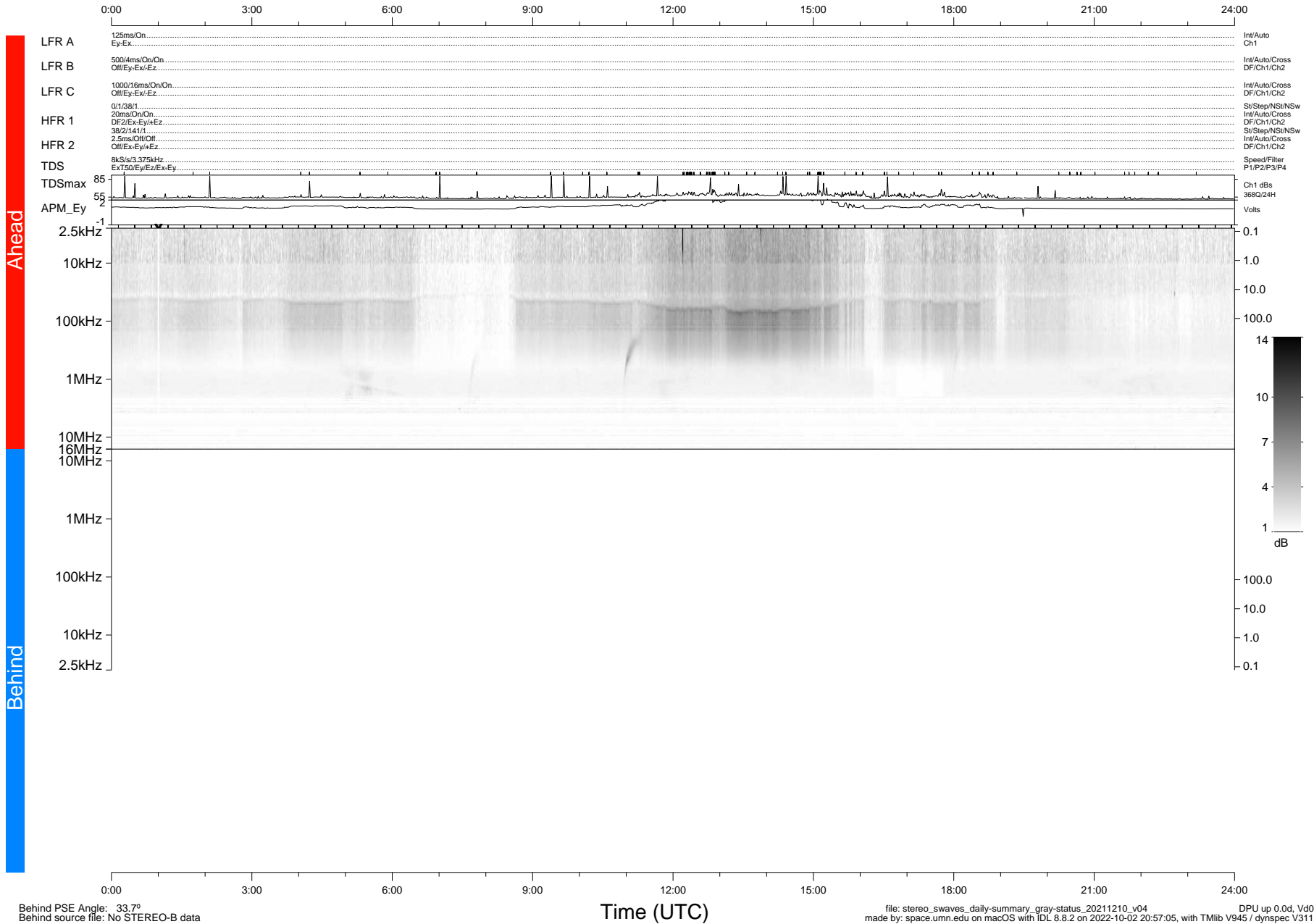


STEREO/WAVES Daily Summary - 10-Dec-2021 (DOY 344)

Ahead source file: swaves_ahead_2021_344_1_05.fin (Recovery: 100.1% HK, 106% Pkts)
 Ahead PSE Angle: -35.9°

DPU up 2347.9d, V412d40



Behind PSE Angle: 33.7°
 Behind source file: No STEREO-B data

Time (UTC)

file: stereo_swaves_daily-summary_gray-status_20211210_v04
 made by: space.umn.edu on macOS with IDL 8.8.2 on 2022-10-02 20:57:05, with Tlib V945 / dynspec V311
 DPU up 0.0d, Vd0