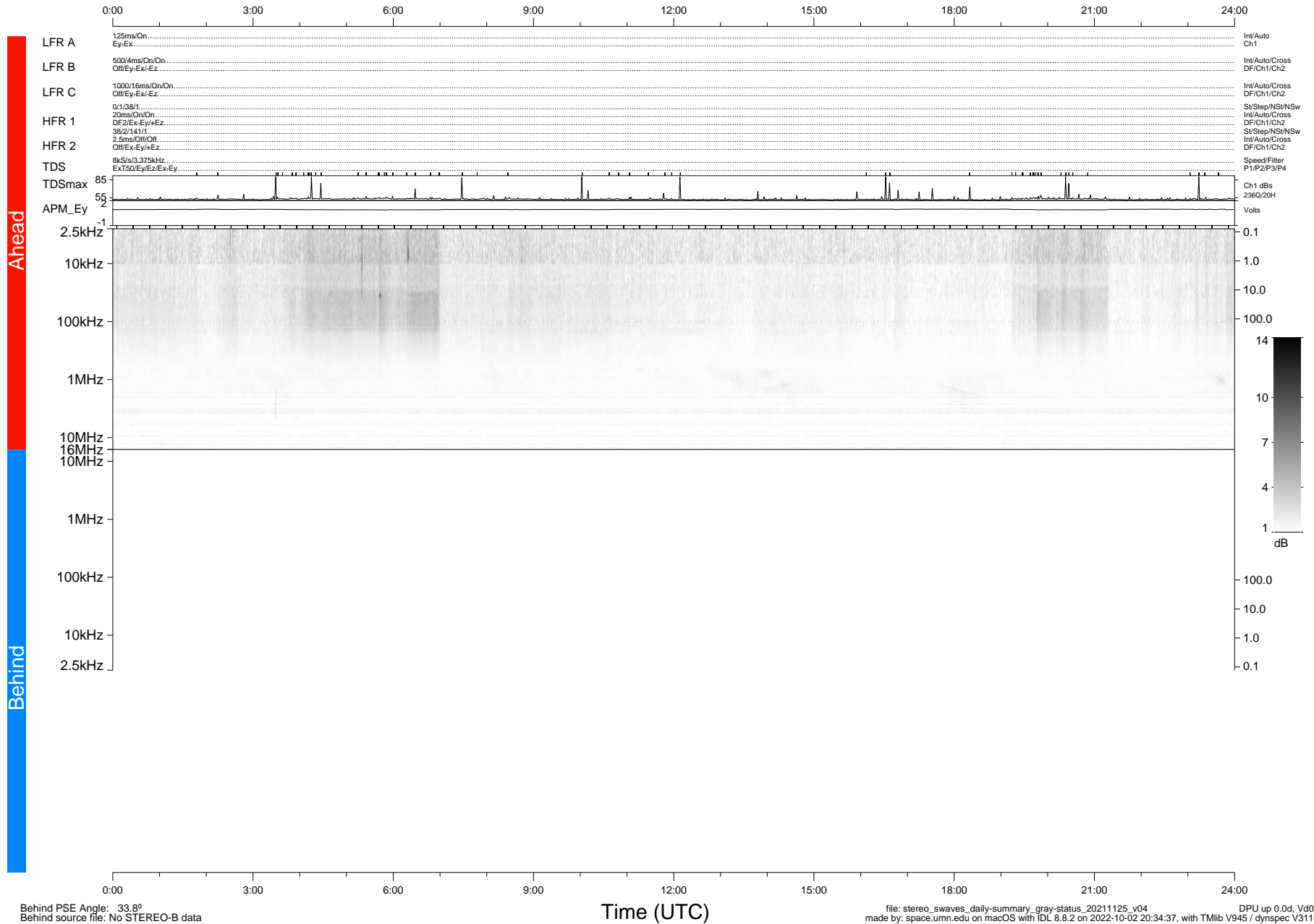


STEREO/WAVES Daily Summary - 25-Nov-2021 (DOY 329)

Ahead source file: swaves_ahead_2021_329_1_06.fin (Recovery: 100.0% HK, 86% Pkts)
 Ahead PSE Angle: -36.4°

DPU up 2332.9d, V412d40



Behind PSE Angle: 33.8°
 Behind source file: No STEREO-B data

file: stereo_swaves_daily-summary_gray-status_20211125_v04
 made by: space.umn.edu on macOS with IDL 8.8.2 on 2022-10-02 20:34:37, with TLib V945 / dynspec V311
 DPU up 0.0d, Vd0