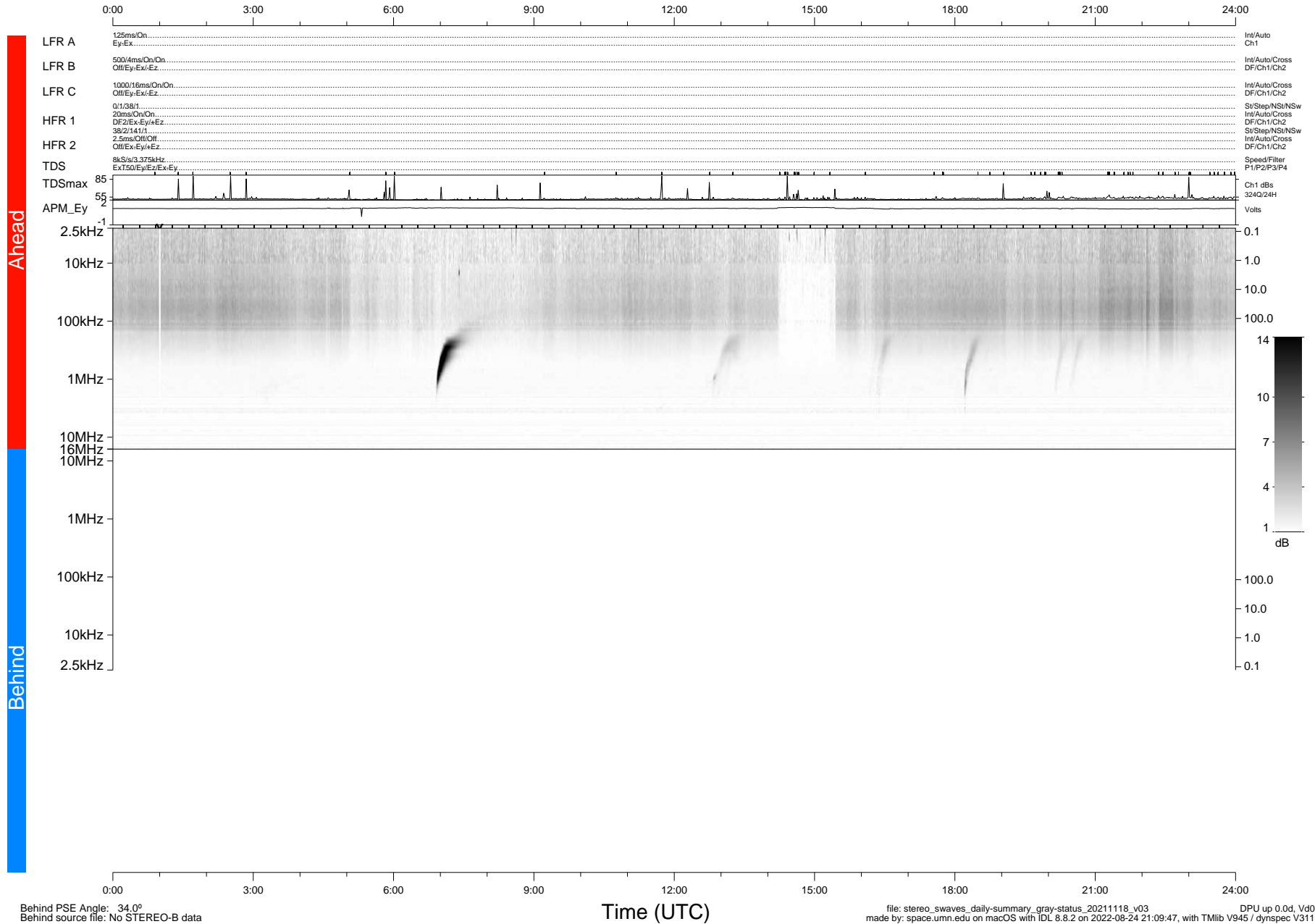


STEREO/WAVES Daily Summary - 18-Nov-2021 (DOY 322)

Ahead source file: swaves_ahead_2021_322_1_05.fin (Recovery: 100.1% HK, 100% Pkts)
 Ahead PSE Angle: -36.6°

DPU up 2325.9d, V412d40



Behind PSE Angle: 34.0°
 Behind source file: No STEREO-B data

file: stereo_swaves_daily-summary_gray-status_20211118_v03 DPU up 0.0d, Vd0
 made by: space.umn.edu on macOS with IDL 8.8.2 on 2022-08-24 21:09:47, with TMLib V945 / dynspec V311