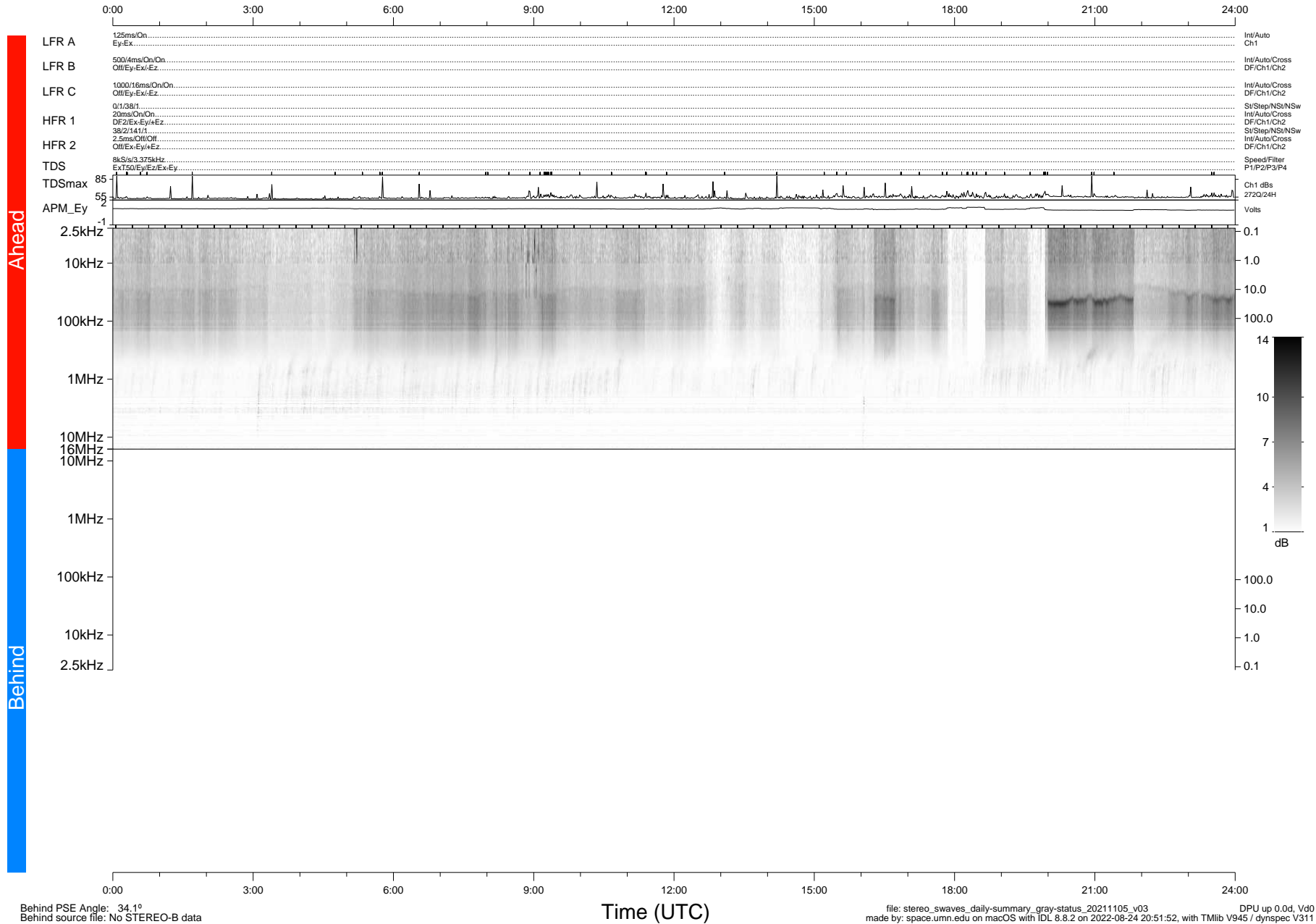


STEREO/WAVES Daily Summary - 05-Nov-2021 (DOY 309)

Ahead source file: swaves_ahead_2021_309_1_06.fin (Recovery: 100.0% HK, 92% Pkts)
 Ahead PSE Angle: -37.2°

DPU up 2312.9d, V412d40



Behind PSE Angle: 34.1°
 Behind source file: No STEREO-B data

file: stereo_swaves_daily-summary_gray-status_20211105_v03
 made by: space.umn.edu on macOS with IDL 8.8.2 on 2022-08-24 20:51:52, with Tlib V945 / dynspec V311
 DPU up 0.0d, Vd0