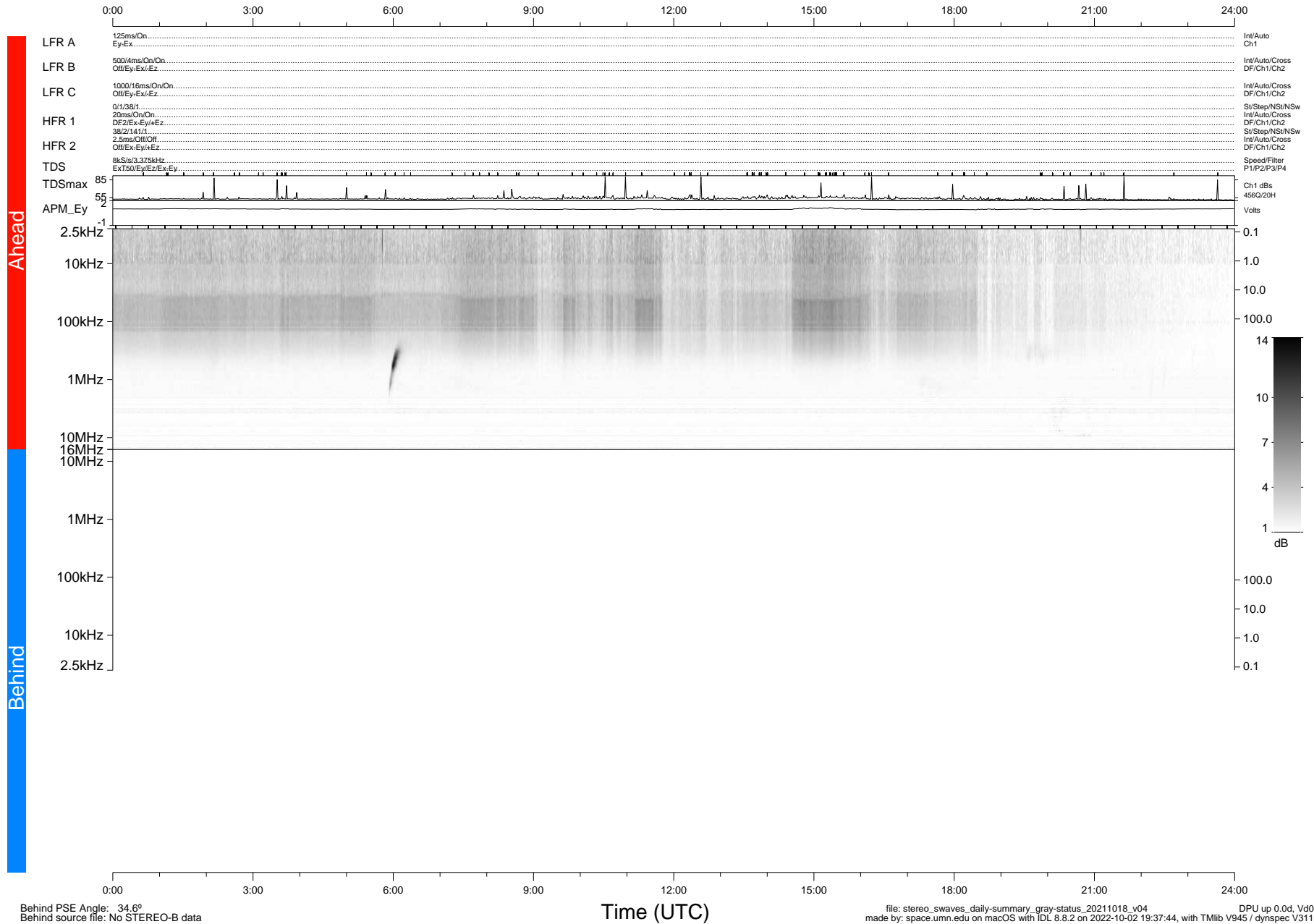


# STEREO/WAVES Daily Summary - 18-Oct-2021 (DOY 291)

Ahead source file: swaves\_ahead\_2021\_291\_1\_05.fin (Recovery: 100.0% HK, 119% Pkts)  
 Ahead PSE Angle: -38.2°

DPU up 2294.9d, V412d40



Behind PSE Angle: 34.6°  
 Behind source file: No STEREO-B data

file: stereo\_swaves\_daily-summary\_gray-status\_20211018\_v04  
 made by: space.umn.edu on macOS with IDL 8.8.2 on 2022-10-02 19:37:44, with Tlib V945 / dynspec V311  
 DPU up 0.0d, Vd0