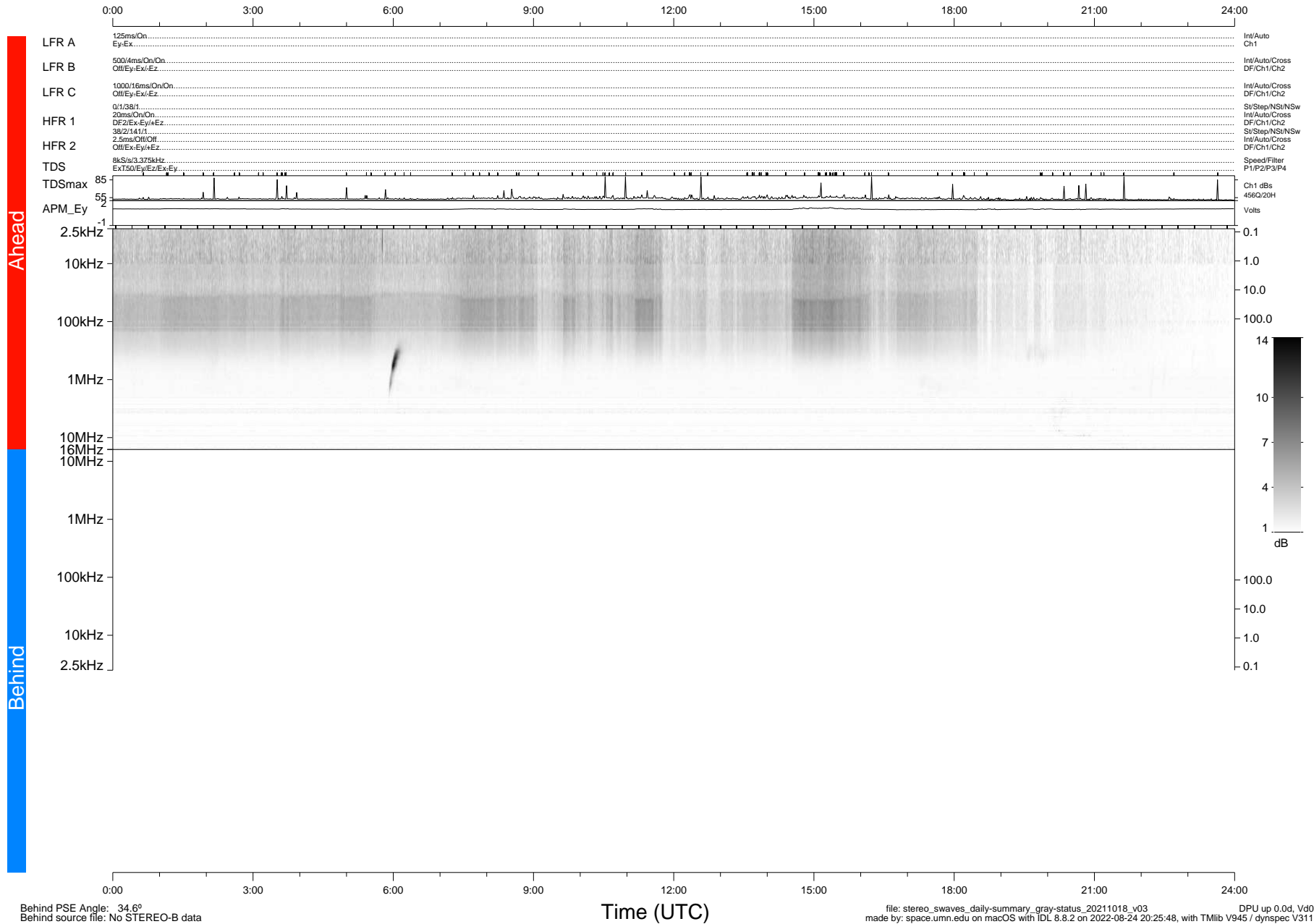


STEREO/WAVES Daily Summary - 18-Oct-2021 (DOY 291)

Ahead source file: swaves_ahead_2021_291_1_05.fin (Recovery: 100.0% HK, 119% Pkts)
 Ahead PSE Angle: -38.2°

DPU up 2294.9d, V412d40



Behind PSE Angle: 34.6°
 Behind source file: No STEREO-B data

Time (UTC)

file: stereo_swaves_daily-summary_gray-status_20211018_v03 DPU up 0.0d, Vd0
 made by: space.umn.edu on macOS with IDL 8.8.2 on 2022-08-24 20:25:48, with TLib V945 / dynspec V311