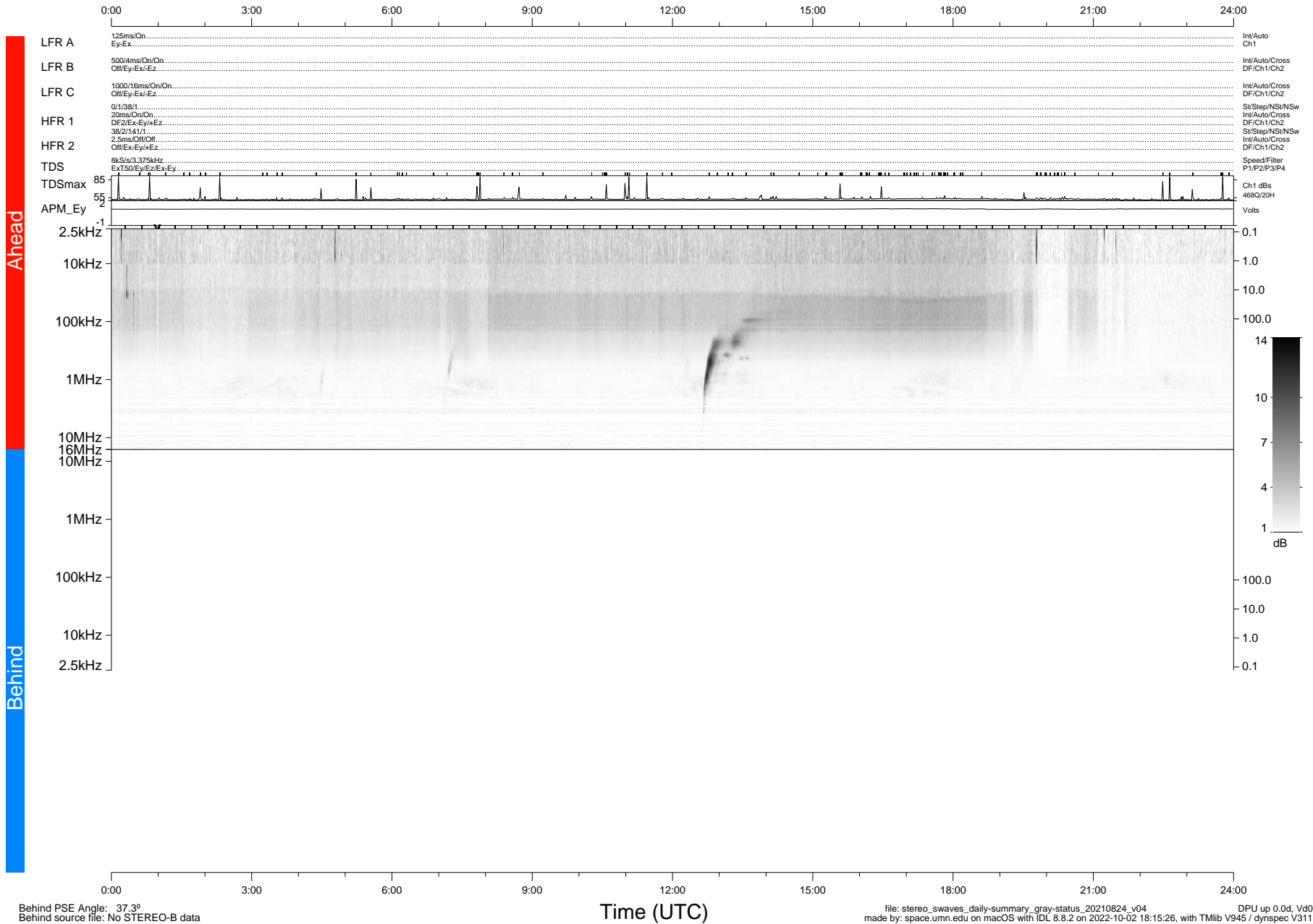


STEREO/WAVES Daily Summary - 24-Aug-2021 (DOY 236)

Ahead source file: swaves_ahead_2021_236_1_05.fin (Recovery: 100.0% HK, 120% Pkts)
 Ahead PSE Angle: -42.6°

DPU up 2239.9d, V412d40



Behind PSE Angle: 37.3°
 Behind source file: No STEREO-B data

Time (UTC)

file: stereo_swaves_daily-summary_gray-status_20210824_v04
 made by: space.umn.edu on macOS with IDL 8.8.2 on 2022-10-02 18:15:26, with Tlib V945 / dynspec V311
 DPU up 0.0d, Vd0