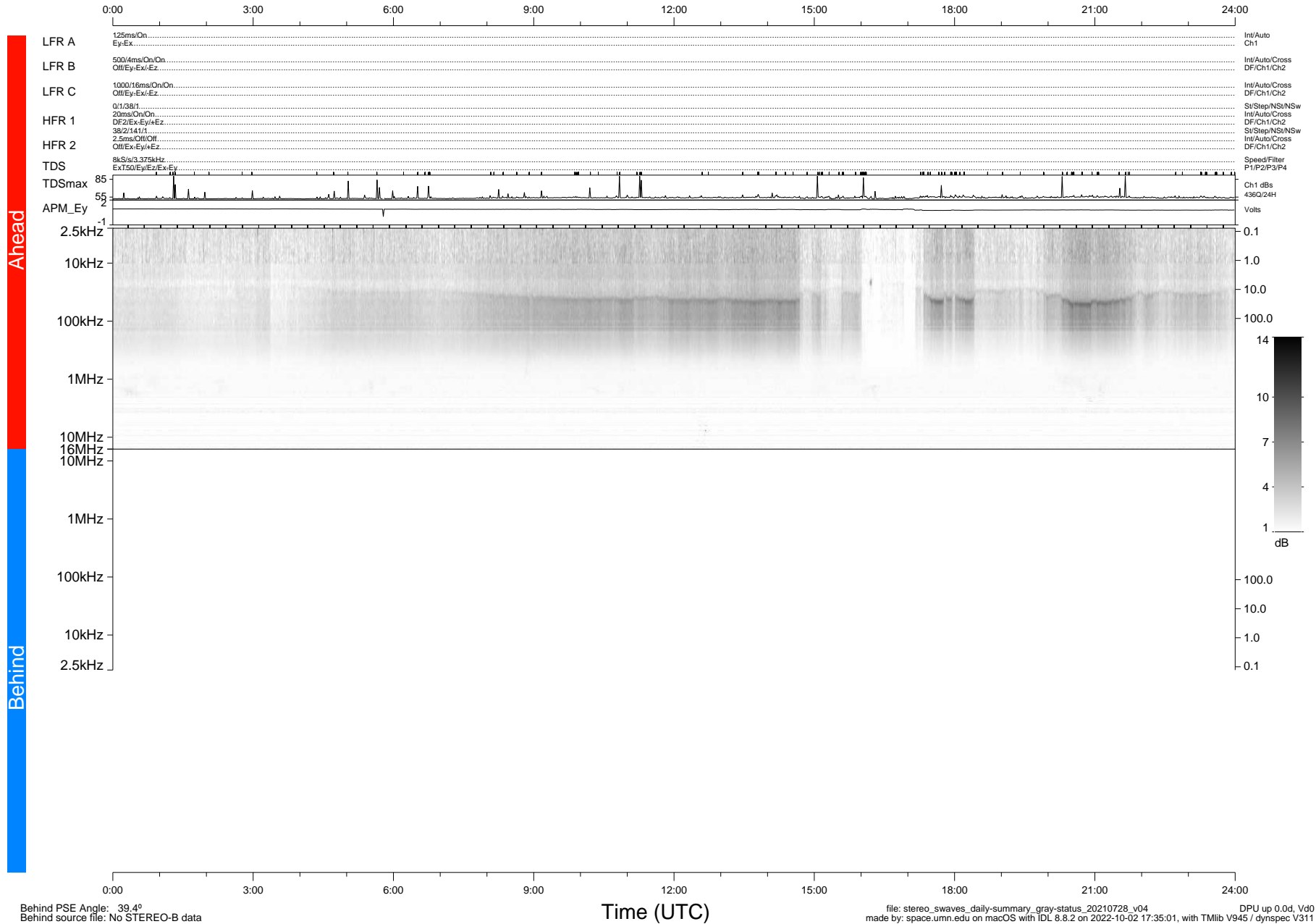


STEREO/WAVES Daily Summary - 28-Jul-2021 (DOY 209)

Ahead source file: swaves_ahead_2021_209_1_06.fin (Recovery: 100.1% HK, 116% Pkts)
 Ahead PSE Angle: -45.2°

DPU up 2212.9d, V412d40



Behind PSE Angle: 39.4°
 Behind source file: No STEREO-B data

file: stereo_swaves_daily-summary_gray-status_20210728_v04
 made by: space.umn.edu on macOS with IDL 8.8.2 on 2022-10-02 17:35:01, with Tlib V945 / dynspec V311
 DPU up 0.0d, Vd0