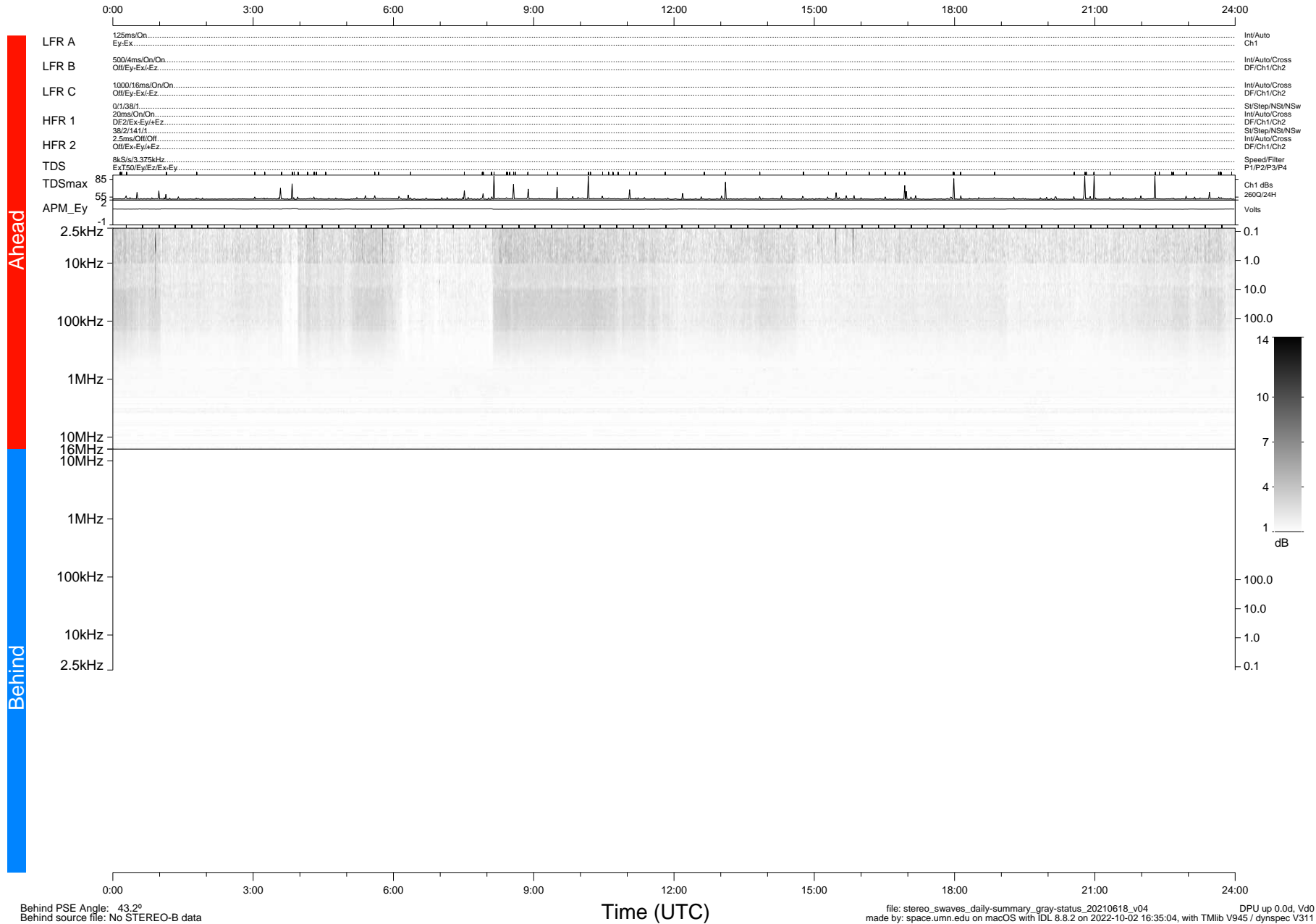


STEREO/WAVES Daily Summary - 18-Jun-2021 (DOY 169)

Ahead source file: swaves_ahead_2021_169_1_05.fin (Recovery: 100.0% HK, 90% PKts)
 Ahead PSE Angle: -49.0°

DPU up 2172.9d, V412d40



Behind PSE Angle: 43.2°
 Behind source file: No STEREO-B data

Time (UTC)

file: stereo_swaves_daily-summary_gray-status_20210618_v04 DPU up 0.0d, Vd0
 made by: space.umn.edu on macOS with IDL 8.8.2 on 2022-10-02 16:35:04, with Tlib V945 / dynspec V311