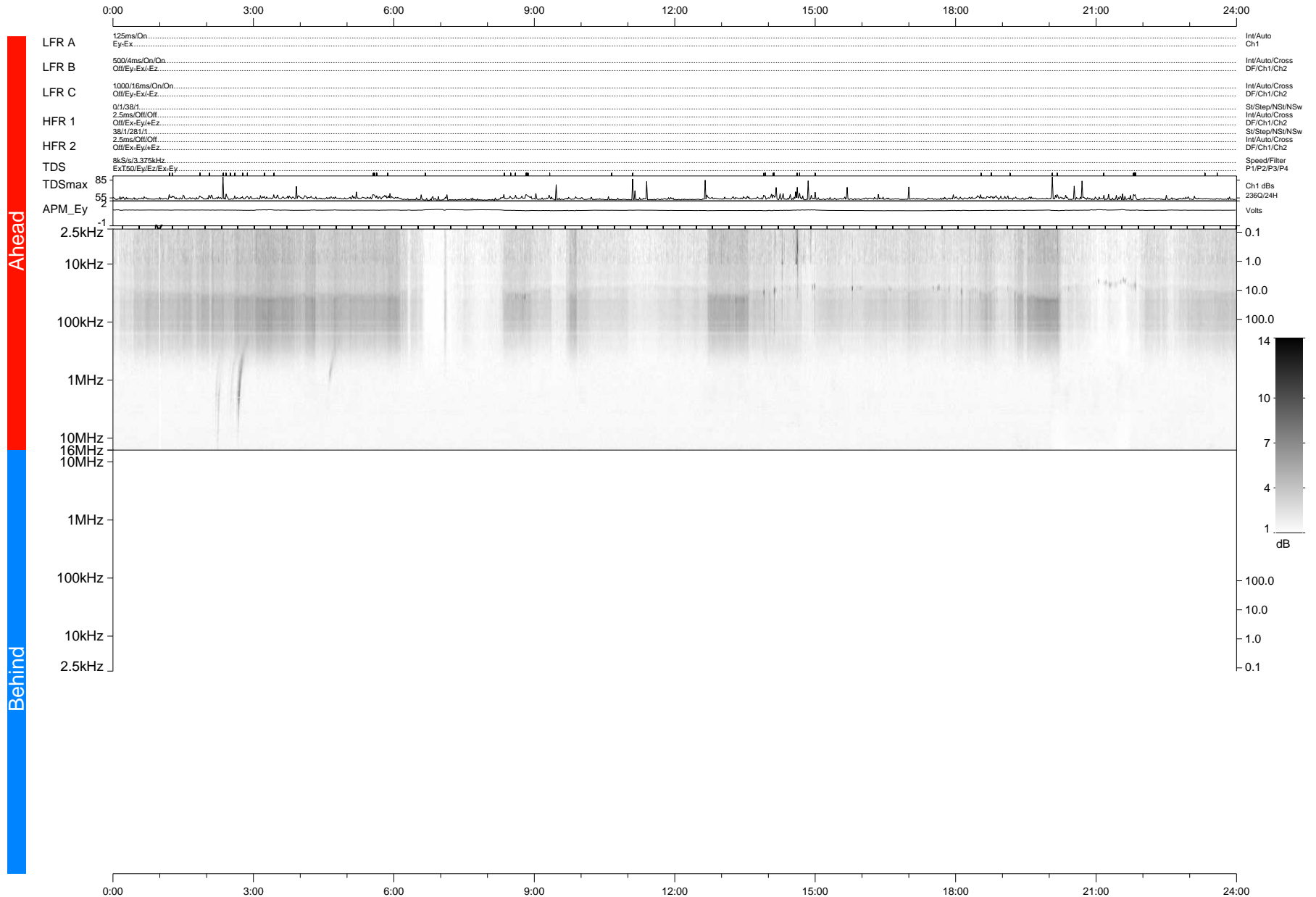


# STEREO/WAVES Daily Summary - 26-May-2021 (DOY 146)

Ahead source file: swaves\_ahead\_2021\_146\_1\_05.fin (Recovery: 100.0% HK, 105% Pkts)  
 Ahead PSE Angle: -50.9°

DPU up 2149.9d, V412d38



Behind PSE Angle: 45.6°  
 Behind source file: No STEREO-B data

Time (UTC)

file: stereo\_swaves\_daily-summary\_gray-status\_20210526\_v03 DPU up 0.0d, Vd0  
 made by: space.umn.edu on macOS with IDL 8.8.2 on 2022-08-24 17:05:40, with TLib V945 / dynspec V311