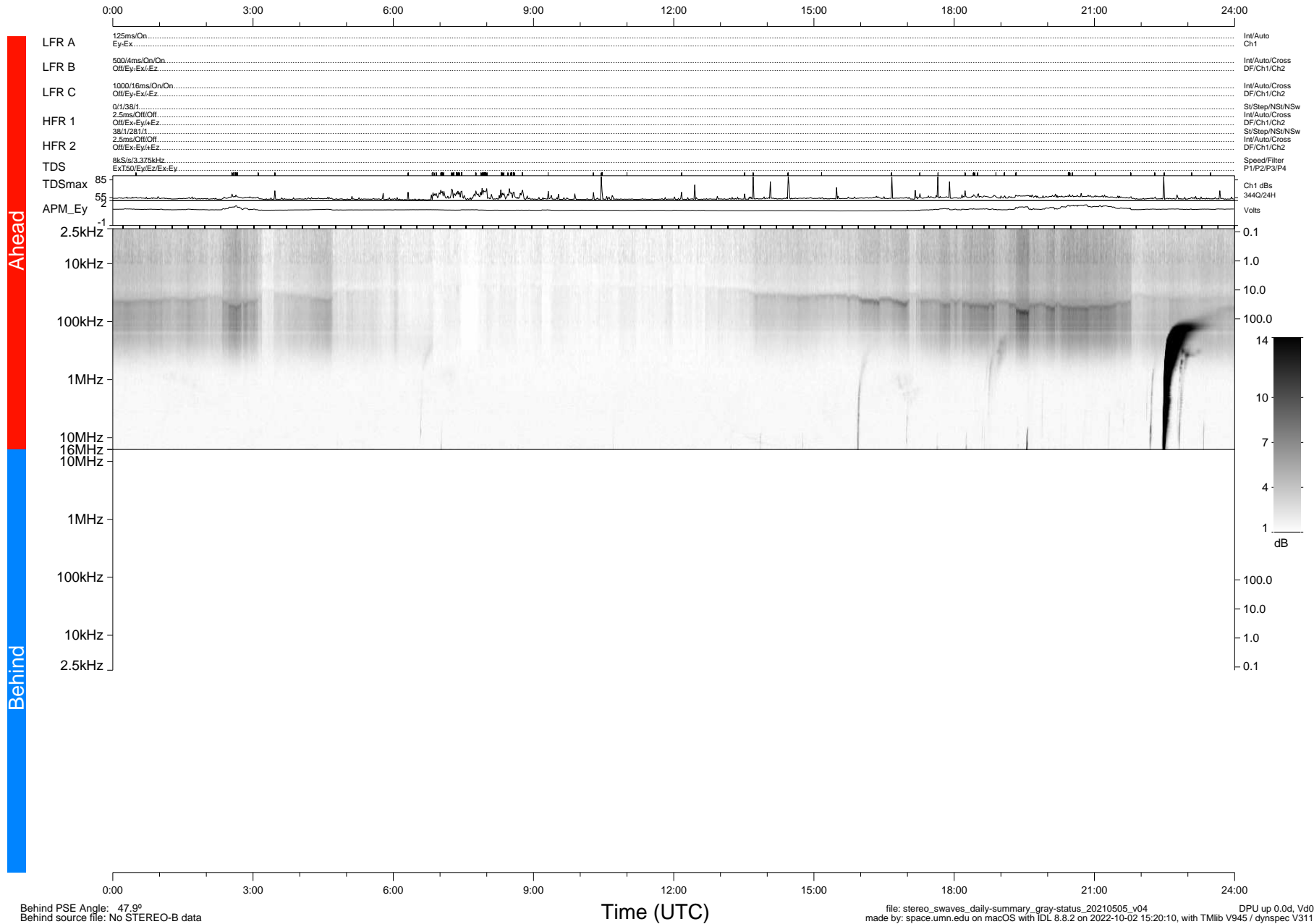


STEREO/WAVES Daily Summary - 05-May-2021 (DOY 125)

Ahead source file: swaves_ahead_2021_125_1_06.fin (Recovery: 100.0% HK, 121% Pkts)
 Ahead PSE Angle: -52.4°

DPU up 2128.9d, V412d38



Behind PSE Angle: 47.9°
 Behind source file: No STEREO-B data

file: stereo_swaves_daily-summary_gray-status_20210505_v04 DPU up 0.0d, Vd0
 made by: space.umn.edu on macOS with IDL 8.8.2 on 2022-10-02 15:20:10, with Tlib V945 / dynspec V311