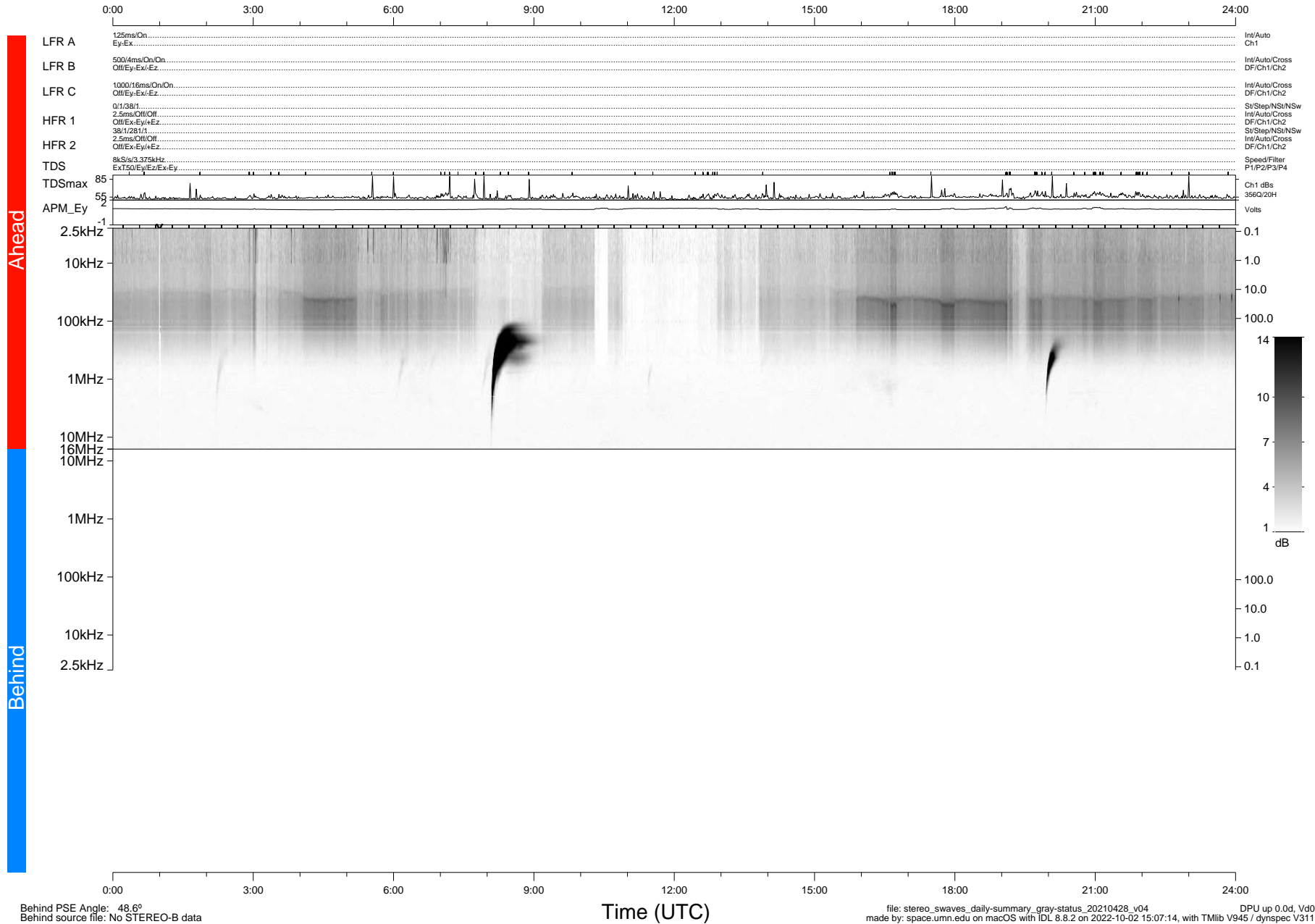


# STEREO/WAVES Daily Summary - 28-Apr-2021 (DOY 118)

Ahead source file: swaves\_ahead\_2021\_118\_1\_05.fin (Recovery: 100.1% HK, 122% Pkts)  
 Ahead PSE Angle: -52.9°

DPU up 2121.9d, V412d38



Behind PSE Angle: 48.6°  
 Behind source file: No STEREO-B data

file: stereo\_swaves\_daily-summary\_gray-status\_20210428\_v04  
 made by: space.umn.edu on macOS with TDL 8.8.2 on 2022-10-02 15:07:14, with Tlib V945 / dynspec V311  
 DPU up 0.0d, Vd0