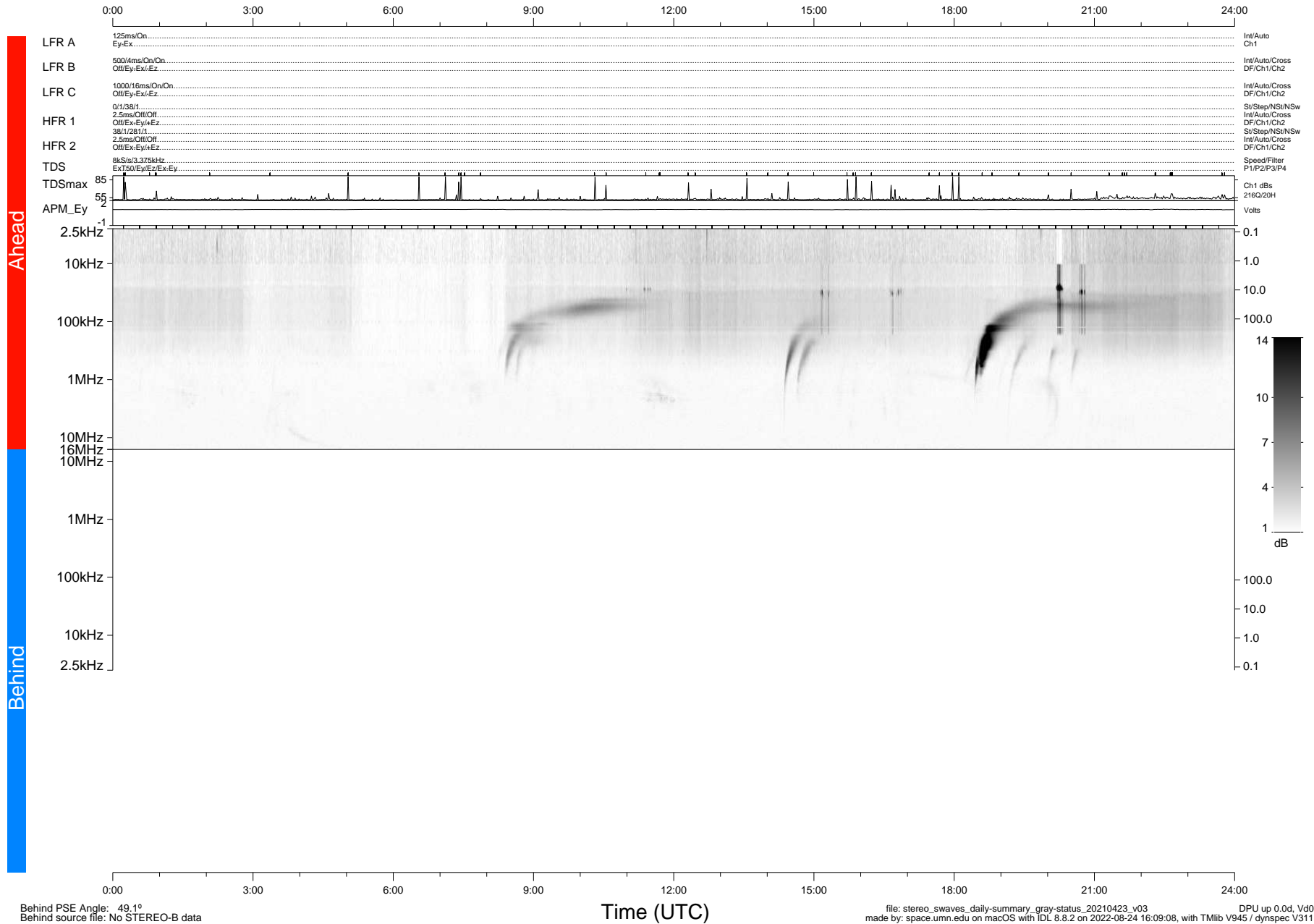


STEREO/WAVES Daily Summary - 23-Apr-2021 (DOY 113)

Ahead source file: swaves_ahead_2021_113_1_05.fin (Recovery: 100.0% HK, 101% Pkts)
 Ahead PSE Angle: -53.3°

DPU up 2116.9d, V412d38



Behind PSE Angle: 49.1°
 Behind source file: No STEREO-B data

file: stereo_swaves_daily-summary_gray-status_20210423_v03
 made by: space.umn.edu on macOS with IDL 8.8.2 on 2022-08-24 16:09:08, with Tlib V945 / dynspec V311
 DPU up 0.0d, Vd0

Time (UTC)