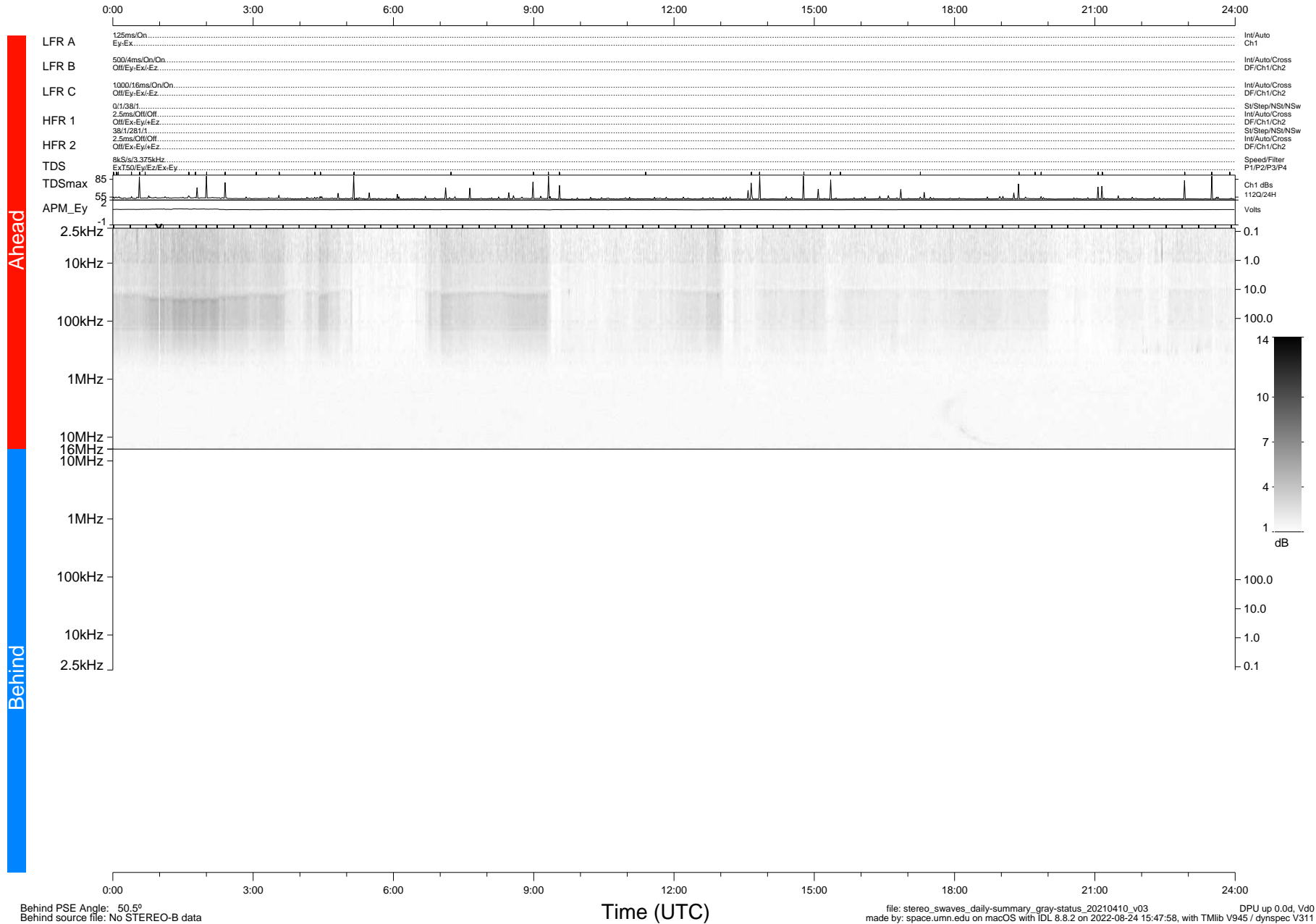


STEREO/WAVES Daily Summary - 10-Apr-2021 (DOY 100)

Ahead source file: swaves_ahead_2021_100_1_05.fin (Recovery: 100.0% HK, 86% Pkts)
 Ahead PSE Angle: -53.9°

DPU up 2103.9d, V412d38



Behind PSE Angle: 50.5°
 Behind source file: No STEREO-B data

file: stereo_swaves_daily-summary_gray-status_20210410_v03 DPU up 0.0d, Vd0
 made by: space.umn.edu on macOS with IDL 8.8.2 on 2022-08-24 15:47:58, with TLib V945 / dynspec V311