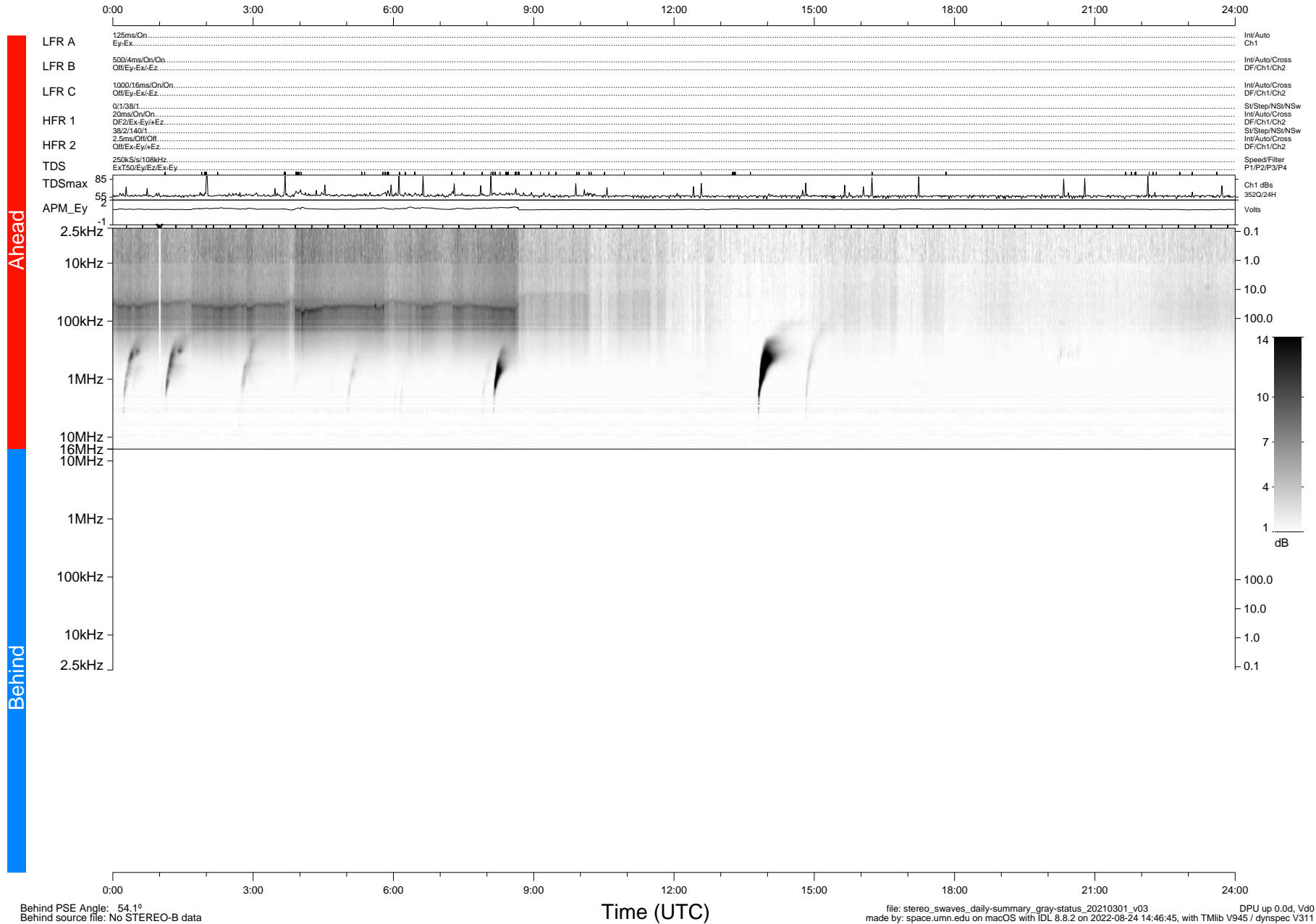


# STEREO/WAVES Daily Summary - 01-Mar-2021 (DOY 060)

Ahead source file: swaves\_ahead\_2021\_060\_1\_05.fin (Recovery: 100.0% HK, 106% Pkts)  
 Ahead PSE Angle: -55.5°

DPU up 2063.9d, V412d32



Behind PSE Angle: 54.1°  
 Behind source file: No STEREO-B data

file: stereo\_swaves\_daily-summary\_gray-status\_20210301\_v03  
 made by: space.umn.edu on macOS with IDL 8.8.2 on 2022-08-24 14:46:45, with Tlib V945 / dynspec V311  
 DPU up 0.0d, Vd0